

**2019  
2020**  
Product  
Catalogue

# Lencare

**Aids and  
Equipment for  
the Aged  
and Disabled**

**Lencare**  
AU

[www.lencare.com.au](http://www.lencare.com.au)



# 2019 2020 Product Catalogue

## AUSTRALIA HEAD OFFICE

14 John Hines Avenue  
Minchinbury NSW 2770  
1300 600 600  
sales@lencare.com.au

SYDNEY  
MELBOURNE  
BRISBANE  
PERTH  
ADELAIDE

**WWW.LENCARE.COM.AU**

LENCARE  
Division Of Davcor Group Pty Ltd  
ABN. 95 003 562 598



# Aids and Equipment for the Aged and Disabled





# T A B L E O F CONTENTS

## 06 About Us

### LEN CARE

Aids and equipment for the aged and disabled. We supply a wide range of hand rails, showers & accessories and wedges.

## Rail Series

### GRAB RAILS

Concealed Fix Grab Rail	12
Exposed Fix Grab Rail	14
Single Hole Fix Grab Rail	16
Offset Grab Rail	18
Combination Grab Rail	19
Sliding Grab Rail	20
Drop Down Grab Rail	22
Shower Recess Grab Rail	24

### MODULAR

Tube	28
Elbows	30
Bends	34
Straight Ends	36
Straight Joiners	38
Tee Section	39
Hand Rail Support	39
Towel Grab Rail	40
Accessories	41

### SPECIAL APPLICATION

In Stock Ready to Order	44
Made to Order	46

### EXTERNAL RAMP RAIL

Brackets	60
Return Set	62
Knuckle Joints	64
Tubing	65
Hook Ends	65
4 Degree Bend Tube	65

## 08

## Bathroom Series

### HAND SHOWERS

Pin Bracket Hand Shower	70
Cradle Bracket Hand Shower	72
Hand Shower with Rail Kit	74

### SHOWER SLIDERS

32mm Chrome Plated	75
Pin Design	75
Claw Design	75

### SHOWER & HOSPITAL TRACKS

L Shaped	80
Straight	80
U Shaped	80
Accessories	81

### SHOWER CURTAINS

Standard Polyester	84
Budget Taffeta	85
Prepacked Polyester	85
Accessories	85

### SHOWER SEATS

### TOILET BACKRESTS

Straight Rail with Padded Rest	89
Curved Rail with Padded Rest	89
Vandal Proof with Curved Backrest	89

### TOILET HARDWARE

Easy Rail Fittings	92
Switchcocks - Water Diverter	92
Backflow Valve	93
Soap Dish	93
Toilet Roll Holder	93

## 66

## Threshold Ramps

### RUBBER

Rubber	96
--------	----

### ALUMINIUM

Single Aluminium	97
Double Sided Aluminium	98

## Key Safe

### WALL MOUNTED

### PORTABLE

MTS CERTIFICATIONS	104
--------------------	-----

MEASUREMENT GUIDES	108
--------------------	-----

PRODUCT INDEX	110
---------------	-----

## 94

### 96

### 97

97
98

## 100

### 102

### 103

### 104

### 108

### 110

# About LENCARE



**L**encare traces its origins back to the year 1946, when Lenlok Hales was founded by Alfred Roy Hales.

It has been 13 years since The Davcor Group took control of Lenlok assets to create Lencare. Since that 2006 acquisition, Lencare has evolved into a major distributor of products that relate to keeping people in their homes for longer. Our range of products is ideal to enable clients, whether aged and disabled, to continue to live a dignified life in their own homes, for as long as they possibly can.

Lencare is a wholesale distributor of products such as standard grab rails, with variations including sliding, drop down, special application grab rails, modular components and an exterior ramp rail system. Other products include hand held showers, shower tracks, shower curtains, folding shower seats, toilet backrests, threshold ramps and key boxes. Our range is ever-evolving, with our new products emanating from our close ties to industry participants, who are offering their ideas for us to manufacture and bring to the market.

Our focus is firmly fixed on our trade account and existing customers. Lencare's high quality staff members have years of industry experience, as well as extensive product knowledge.

We can assist installers and providers who may have the need for our products on a short term basis, as we are aware that products like ours are not typically mainstream.

As many of our specialised products are difficult to find within the retail industry, Lencare has created an online retail option, where customers can select, pay for and have their products delivered to their premises.

As the industry changes and new structures such as My Aged Care and the NDIS continue to evolve, Lencare will be ready and able to meet the needs of all participants, installers and end users. Our commitment to supplying reliable, exceptional quality and fairly priced products will always be our priority.

*Our vision is simple. Lencare will aim to provide our customers with the products they want, to be delivered in the time frame they expect and in a fashion that is expected of a reputable supplier.*



# R A I L

## S E R I E S

Grab Rails

Modular Grab Rails

Special Application Grab Rails

External Ramp Rails

# Renowned for **quality** across the industry.

Grab rails are the foundation of the Lencare business. We have built a solid reputation on our 304 stainless steel range of rails, providing much more than the standard grab rail. With contributions from key industry figures on standards and market requirements, Lencare has a range of products that cover every aspect of the grab rail market.

Lencare offers the Australian Standards size grab rail diameter of 32mm. We additionally carry a smaller range of 25mm grab rails. Both sizes are available with the option of concealed or exposed fixing. The choice of brushed stainless steel or a mirror polished version is also available. We offer a peened or firm grip version to cater for client preference.

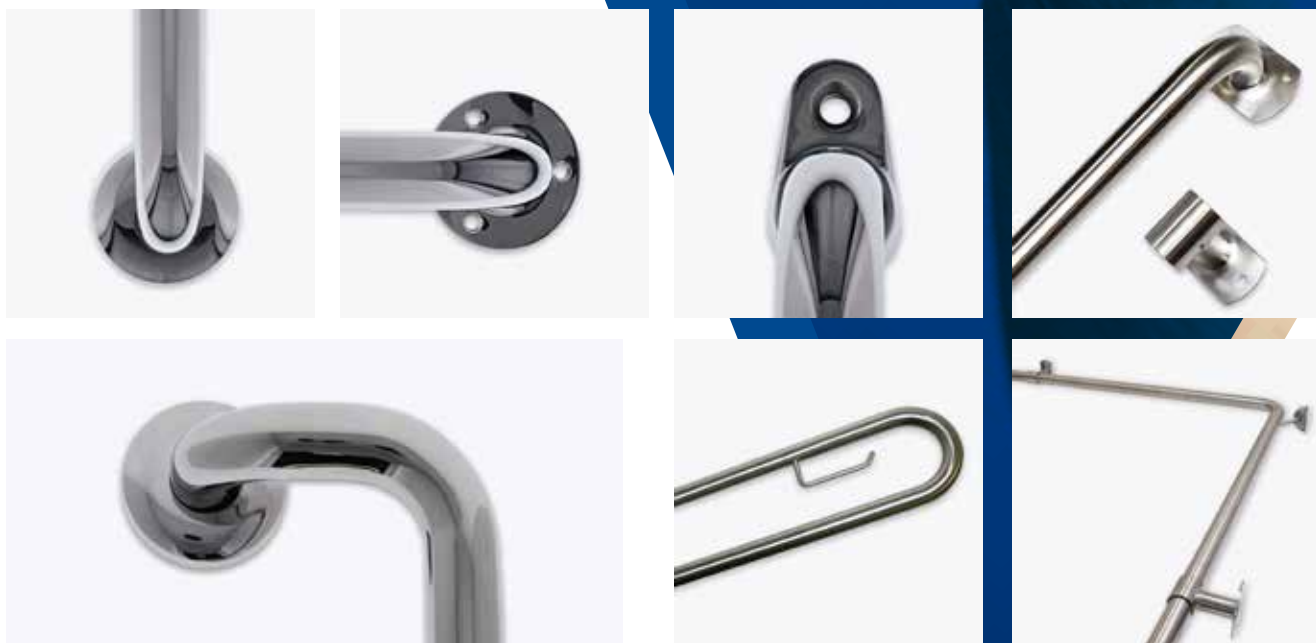
Variations of grab rails exist within our range, such as single hole grab rails for areas where limitation of room to fix may occur, and drop down rails that fit adjacent to toilets. Waist high shower rails are a great addition to bathrooms for people seeking extra stability

when showering. We offer a new offset grab rail designed to aid the unsteady in grabbing the rail easily when exiting a doorway. Bathroom rails, toilet support rails and modular grab rails are also part of our extensive selection of products.

Finally, as a natural extension to our rail products, Lencare has developed an exterior ramp rail system made of 304 stainless steel. The beauty of this system is it can be pieced together without the need to weld and transport it to the installation site. The welcome addition of our patented knuckle joint allows a degree of flexibility beyond standard angles when assembling the ramps.



CONCEALED FIX  
EXPOSED FIX  
SINGLE HOLE  
SLIDING  
OFFSET  
COMBINATION  
DROP DOWN  
SHOWER RECESS



# GRAB RAILS



## Quality tested

Lencare grab rails are renowned for their quality across a range of industries, including the health care industry, retail hardware and manufacturing. Builders of commercial and residential facilities, as well as home modification installers, rely regularly on that quality. Our rails are made of 304 grade stainless steel and variations of finish include brushed, polished, peened (an etch like process to reduce slip) and powder coated colours of white and almond ivory.

Lencare has undertaken independent testing of its range of rails, in order to satisfy customers at all levels of the strength and durability of the product. Testing was carried out on standard, single hole and drop down grab rails, leaving no doubt of the exacting quality Lencare rails offer all sections of our customer base. It gives both the buyer and the end user peace of mind, as well as an assurance of quality, especially when comparing Lencare rails to inferior imported items sold through bulk retail outlets or mushrooming wholesalers. If in any doubt, ask to see the credentials of their testing and compare the results with ours (which you will find in this catalogue). It will be clear that Lencare rails are the industry choice.






# CONCEALED F I X


## G R A B R A I L

- + Made to industry standards and of 304 grade stainless steel.
- + Rail diameter size option of 32mm and 25mm.
- + Sold individually or in box quantities of 10.
- + Finished off with a snug fitting concealed cover plate (screws & wall plugs provided).
- + Offers five hole fixing flexibility which provides the installer with a wider option of fitting points where inconsistency behind the walls may occur.
- + A vast range of different lengths to choose from; 225mm up to 1200mm (some finishes only). Length is measured in between the centre of each flange.
- + Available in finishes of brushed stainless steel, polished stainless steel, peened (firm grip) stainless steel, white, white ripple, almond ivory and almond ivory ripple.



**Peened Stainless Steel**  
All products are packaged in poly bag.

32mm	
Code	Size
3982	300mm x 32mm
3983	450mm x 32mm
3984	600mm x 32mm
3985	750mm x 32mm
3986	900mm x 32mm
3987	1200mm x 32mm



**Brushed Stainless Steel**  
All products are packaged in poly bag.

32mm	
Code	Size
3732	225mm x 32mm
1517	300mm x 32mm
1521	450mm x 32mm
1523	600mm x 32mm
3766	750mm x 32mm
1525	900mm x 32mm
1527	1200mm x 32mm


25mm	
Code	Size
1505	300mm x 25mm
1509	450mm x 25mm
1511	600mm x 25mm
1519	750mm x 25mm
1513	900mm x 25mm



**Polished Stainless Steel**  
All products are packaged in poly bag.

32mm	
Code	Size
3732P	225mm x 32mm
1517P	300mm x 32mm
1521P	450mm x 32mm
1523P	600mm x 32mm
3766P	750mm x 32mm
1525P	900mm x 32mm
1527P	1200mm x 32mm


25mm	
Code	Size
3468	300mm x 25mm
3470	450mm x 25mm
3471	600mm x 25mm
3493	750mm x 25mm
3494	900mm x 25mm



**White**  
All products are packaged in poly bag.

32mm	
Code	Size
1517-W	300mm x 32mm
1521-W	450mm x 32mm
1523-W	600mm x 32mm
3766-W	750mm x 32mm
1525-W	900mm x 32mm
1527-W	1200mm x 32mm


25mm	
Code	Size
3424	300mm x 25mm
3425	450mm x 25mm
3426	600mm x 25mm
3807	750mm x 25mm
3786	900mm x 25mm



**White Ripple**  
All products are packaged in poly bag.

32mm	
Code	Size
3988	300mm x 32mm
3989	450mm x 32mm
3990	600mm x 32mm
3991	750mm x 32mm
3992	900mm x 32mm
3993	1200mm x 32mm


25mm	
Code	Size
3270	300mm x 25mm
3271	450mm x 25mm
3272	600mm x 25mm
3273	750mm x 25mm
3274	900mm x 25mm



**Almond Ivory**  
All products are packaged in poly bag.

32mm	
Code	Size
1517-AI	300mm x 32mm
1521-AI	450mm x 32mm
1523-AI	600mm x 32mm
3766-AI	750mm x 32mm
1525-AI	900mm x 32mm
1527-AI	1200mm x 32mm

25mm	
Code	Size
3483	300mm x 25mm
3484	450mm x 25mm
3485	600mm x 25mm
3486	750mm x 25mm
3487	900mm x 25mm



**Almond Ivory Ripple**  
All products are packaged in poly bag.

32mm	
Code	Size
3994	300mm x 32mm
3995	450mm x 32mm
3996	600mm x 32mm
3997	750mm x 32mm
3998	900mm x 32mm
3999	1200mm x 32mm

25mm	
Code	Size
3275	300mm x 25mm
3276	450mm x 25mm
3277	600mm x 25mm
3278	750mm x 25mm
3279	900mm x 25mm





# EXPOSED F I X

G R A B R A I L



- Made to industry standards and of 304 grade stainless steel.
- Rail diameter size option of 32mm and 25mm.
- Sold individually or in box quantities of 10.
- Countersunk exposed fixing holes provides a neat appearance (screws & wall plugs provided).
- Offers three hole fixing flexibility which provides the installer with a wider option of fitting points where inconsistency behind the walls may occur.
- A vast range of different lengths to choose from; 225mm up to 1200mm (some finishes only). Length is measured in between the centre of each flange.
- Available in finishes of brushed stainless steel, polished stainless steel, peened (firm grip) stainless steel, white and almond ivory.



**Brushed Stainless Steel**

All products are packaged in poly bag.

32mm	
Code	Size
1516	300mm x 32mm
1520	450mm x 32mm
1522	600mm x 32mm
3768	750mm x 32mm
1524	900mm x 32mm
1526	1200mm x 32mm

25mm	
Code	Size
1504	300mm x 25mm
1508	450mm x 25mm
1510	600mm x 25mm
1530	750mm x 25mm
1512	900mm x 25mm
1514	1200mm x 25mm



**Polished Stainless Steel**

All products are packaged in poly bag.

32mm	
Code	Size
1471	300mm x 32mm
1475	450mm x 32mm
1477	600mm x 32mm
1479	750mm x 32mm
1481	900mm x 32mm
1478	1200mm x 32mm

25mm	
Code	Size
1455	225mm x 25mm
1457	300mm x 25mm
1459	375mm x 25mm
1461	450mm x 25mm
1463	600mm x 25mm
1465	750mm x 25mm
1467	900mm x 25mm
1469	1200mm x 25mm



**Peened Stainless Steel**

All products are packaged in poly bag.

32mm	
Code	Size
1482	300mm x 32mm
1483	450mm x 32mm
1484	600mm x 32mm
1485	750mm x 32mm
1486	900mm x 32mm
1487	1200mm x 32mm

25mm	
Code	Size
1458	300mm x 25mm
1462	450mm x 25mm
1464	600mm x 25mm
1448	900mm x 25mm



**White**

All products are packaged in poly bag.

32mm	
Code	Size
3783	300mm x 32mm
3784	450mm x 32mm
3785	600mm x 32mm

25mm	
Code	Size
3724	300mm x 25mm
3725	450mm x 25mm
3735	600mm x 25mm
3736	750mm x 25mm
3737	900mm x 25mm



**Almond Ivory**

All products are packaged in poly bag.

32mm	
Code	Size
3800	300mm x 32mm
3801	450mm x 32mm
3802	600mm x 32mm

25mm	
Code	Size
3777	300mm x 25mm
3778	450mm x 25mm
3779	600mm x 25mm







Standard Single Hole

Flat Flange Single Hole

# SINGLE HOLE F I X

G R A B R A I L

- + Made to industry standards and of 304 grade stainless steel.
- + Rail diameter size option of 32mm and 25mm.
- + Sold individually or in box quantities of 10.
- + Available in exposed fixing only, with a single hole fixing on each end (Screws & wall plugs provided).
- + Two models available in the 32mm diameter, being the standard raised flange and a flat flange. The 25mm range only offers the raised flange.
- + A vast range of different lengths to choose from; 225mm up to 900mm (some finishes only). Length is measured in between the centre of each rail.
- + Available in finishes of brushed stainless steel, polished stainless steel, peened (firm grip) stainless steel, white, white ripple, almond ivory and almond ivory ripple.



### Peened Stainless Steel

All products are packaged in poly bag.

32mm	
Code	Size
3110	300mm x 32mm
3111	450mm x 32mm
3112	600mm x 32mm
3113	750mm x 32mm
3114	900mm x 32mm

25mm	
Code	Size
3717	300mm x 25mm
3718	450mm x 25mm
3719	600mm x 25mm
3775	750mm x 25mm
3776	900mm x 25mm



### Brushed Stainless Steel

All products are packaged in poly bag.

32mm	
Code	Size
3107	300mm x 32mm
3108	450mm x 32mm
3109	600mm x 32mm

25mm	
Code	Size
3449	225mm x 25mm
3452	300mm x 25mm
3454	450mm x 25mm
3455	600mm x 25mm
3456	750mm x 25mm
3460	900mm x 25mm



### Polished Stainless Steel

All products are packaged in poly bag.

32mm	
Code	Size
3107P	300mm x 32mm
3108P	450mm x 32mm
3109P	600mm x 32mm

25mm	
Code	Size
3767	225mm x 25mm
3462	300mm x 25mm
3463	450mm x 25mm
3464	600mm x 25mm
3740	750mm x 25mm
3761	900mm x 25mm



### White

All products are packaged in poly bag.

32mm	
Code	Size
3107W	300mm x 32mm
3108W	450mm x 32mm
3109W	600mm x 32mm

25mm	
Code	Size
3723	300mm x 25mm
3765	450mm x 25mm
3838	600mm x 25mm



### White Ripple

All products are packaged in poly bag.

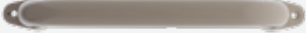
25mm	
Code	Size
3723W-R	300mm x 25mm
3765W-R	450mm x 25mm
3838W-R	600mm x 25mm



### Almond Ivory Ripple

All products are packaged in poly bag.

25mm	
Code	Size
3780AI-R	300mm x 25mm
3781AI-R	450mm x 25mm
3782AI-R	600mm x 25mm



### Almond Ivory

All products are packaged in poly bag.

32mm	
Code	Size
3107A-I	300mm x 32mm
3108A-I	450mm x 32mm
3109A-I	600mm x 32mm

25mm	
Code	Size
3780	300mm x 25mm
3781	450mm x 25mm
3782	600mm x 25mm

## Flat Flange Single Hole

Has a flat flange and this design allows it to be used with other flat flanged modular products, such as elbow ends, corner elbows, and even exposed grab rails. It maintains a uniform appearance in the one room.



### Brushed Stainless Steel

All products are packaged in poly bag.

32mm - Flat Flange	
Code	Size
3207	300mm x 32mm
3208	450mm x 32mm
3209	600mm x 32mm



### White

All products are packaged in poly bag.

32mm - Flat Flange	
Code	Size
3207W	300mm x 32mm
3208W	450mm x 32mm
3209W	600mm x 32mm



### Almond Ivory

All products are packaged in poly bag.

32mm - Flat Flange	
Code	Size
3207A-I	300mm x 32mm
3208A-I	450mm x 32mm
3209A-I	600mm x 32mm



# OFFSET

## G R A B R A I L

This is a new, unique item that has been developed with the help of home modification experts and Occupational Therapists (OTs). It is an offset grab rail. It is unique in its design because it has a shape that protrudes from its fitting point, thus allowing an easier and more positive grasp of the rail.

It has many uses, but ideally can be used when exiting a door. Being this shape, it enables the person to see and ultimately grab the rail. In many situations, people would have to feel for a parallel rail using quite an unnatural action.



### Brushed Stainless Steel

All products are packaged in poly bag.

**32mm**

Code	Size
OGR-300	300mm x 32mm
OGR-450	450mm x 32mm



### Polished Stainless Steel

All products are packaged in poly bag.

**32mm**

Code	Size
OGR-300P	300mm x 32mm
OGR-450P	450mm x 32mm

- ⊕ Made to industry standards and of 304 grade stainless steel.
- ⊕ 32mm diameter with two lengths options, 300mm and 450mm.
- ⊕ Easier and more positive grasp of the rail due to the design.
- ⊕ Five fixing holes on each of the flanges.
- ⊕ Available in two finishes. Brushed stainless steel & polished stainless steel.
- ⊕ Sold individually or in box quantities of 10.

The design of this rail helps reduce the need to reach around and search for the rail, in order to steady themselves.

It is strongly recommended that you utilise the five fixing holes on each of the flanges, as the design of the product allows for more pulling force and the more securely it can be fixed, the better.

## Our New Product

# COMBINATION GRAB RAIL

The Lencare combination grab rail is a standard grab rail but with differing ends.

One is a standard round concealed flange, the other is a squared off concealed flange that can fit hard up into a corner or against an architrave.

Available in sizes of 300mm, 450mm & 600mm. Sold in a satin stainless steel finish.

Code	Length	Finish
CGR-300	300mm	Satin Stainless Steel
CGR-450	450mm	Satin Stainless Steel
CGR-600	600mm	Satin Stainless Steel

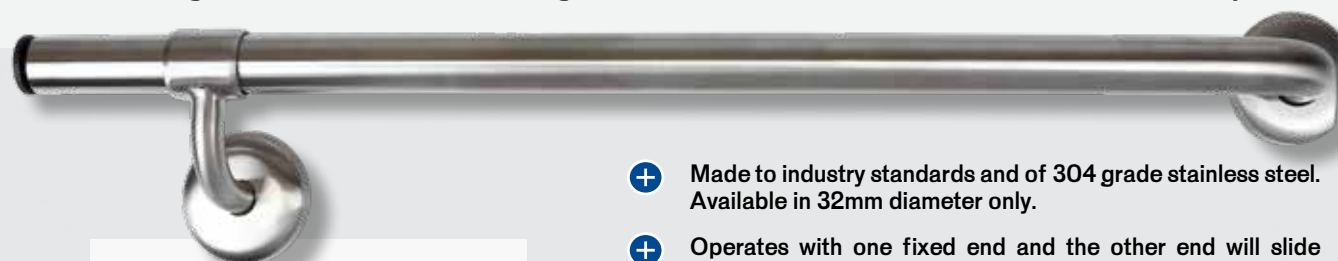
[www.lencare.com.au](http://www.lencare.com.au)





### New Sliding Grab Rail

As a result of customer feedback, Lencare decided to alter the design of a long serving product, that being the sliding grab rail. The decision to do so was based around the need to bring the old product more into line with modern expectations of performance and improved looks. Using the existing framework, Lencare opted for a squared off fixed end and changed the sliding component of the rail to a more workable undersling design. With both the fixed and sliding ends complete with covered flanges, the immediate aesthetic appearance improved dramatically.



#### Brushed Stainless Steel

All products are packaged in poly bag.  
Sold individually or in box quantities of 10.

#### 32mm New Sliding Grab Rail

Code	Size
3532-750	750mm x 32mm
3532-1000	1000mm x 32mm

Code	Description
3532-1	Bracket

- Made to industry standards and of 304 grade stainless steel. Available in 32mm diameter only.
- Operates with one fixed end and the other end will slide along the length of the rail until the desired fixing point has been located. Once the fixing point has been found, cut the rail to suit and secure the sliding undersling bracket.
- The sliding rail bracket has an undersling that allows a full 270 degree hand movement over the rail. The bracket also has a threaded grub screw locating fixing. An allen key is supplied with the unit.
- The sliding bracket is bevelled on either side, allowing a smooth hand travel along the rail.
- There is a plastic plug in the end of the tube, providing a neat and professional finish on the 'cut' end.
- Available in brushed stainless steel only. White and almond ivory available as a special order upon request.

Available in concealed fixing with screws and wall plugs provided. Additional brackets can be purchased separately, use 3532-1.

Page 60



Page 41

The squared off end will fit hard into a corner if needed. Alternatively, if the rail is not required to fit into a corner & a round flange is preferred, you can purchase a round flange separately (N3-FC-RND). Simply remove the squared flange and replace with the other. This can then offer a uniformed round flange look on both ends.



### Original Sliding Grab Rail

The original sliding rail unit is made with one fixed end and one sliding bracket that can be positioned where a stud exists behind a wall. Different lengths of 750mm and 1000mm to choose from, with rail diameter options of 32mm and 25mm. With brushed stainless steel finish, the original sliding grab rail will look great anywhere, be it in the bathroom or any walls around the house.



#### Brushed Stainless Steel

All products are packaged in poly bag.  
Sold individually or in box quantities of 10.

#### 32mm Original Sliding Grab Rail

Code	Size
3530-750	750mm x 32mm
3530-1000	1000mm x 32mm

Code	Description
3530-1	Bracket
3530-2	Bracket (grub screw fix)

#### 25mm Original Sliding Grab Rail

Code	Size
3429-750	750mm x 25mm
3429-1000	1000mm x 25mm

Code	Description
3429-1	Bracket
3429-2	Bracket (grub screw fix)

- Made to industry standards and of 304 grade stainless steel.
- Operates with one fixed end and the other end will slide along the length of the rail until the desired fixing point has been located. Once the fixing point has been found, cut the rail to suit and secure the sliding bracket.
- The sliding brackets have a hole pre drilled in them, which a screw or rivet can be utilised to secure the two parts together.
- There is a plastic plug in the end of the tube, providing a neat and professional finish on the 'cut' end.
- Available in brushed stainless steel only. White and almond ivory available as a special order upon request.



Available in exposed fixing with screws and wall plugs provided. Additional sliding rail brackets can be purchased separately. Use 3530-1 for 32mm old screw fixed, 3530-2 for grub screw fixed. Use 3429-1 for 25mm old screw fixed, 3429-2 for grub screw fixed.





# DROP DOWN

G R A B R A I L

## Standard Drop Down + Drop Down with Toilet Roll Holder

In addition to the range of grab rails, Lencare offers a high quality series of drop down rails for the aged and disabled industry. These products have been tested locally. They meet and surpass Australian Standards.



## The Features:

- + Made to industry standards and of 304 grade stainless steel and supplied in a brushed stainless steel finish.
- + Ideal for the aged and disabled. Designed to offer support to individuals as they either rise from or lower to a toilet seat.
- + Can be lifted up and placed out of the way, so as not to interfere with either entering or exiting.
- + Provided with a rubber stop that prevents the arm banging into the wall.
- + Once the drop down arm is lifted, it is sufficiently tensioned to remain in its upright position until lowered manually by the next user.
- + Model options with or without a toilet roll holder (screws and wall plugs provided).
- + Both models have rail diameter size of 35mm and projects 800mm or 900mm from the wall in a lowered position and is 195mm high.
- + Wide stainless steel plate 300mm x 100mm x 2mm with 8 fixing points providing multiple fitting options.
- + Neat appearance offers appeal to all establishments. Can be powder coated to individual requirements.
- + Sold individually or in box quantities of 4.



LK030

### Brushed Stainless Steel

#### Standard

Code	Size
LK031	800mm standard
LK031-900	900mm standard

#### With toilet roll holder

Code	Size
LK030	800mm with toilet roll holder
LK030-900	900mm with toilet roll holder



# SHOWER RECESS

## G R A B R A I L

### Brushed Stainless Steel

#### Standard

Code	Description	Bracket Style
3203SR	Waist shower grab rail	Sliding

#### With concealed flanges

Code	Description	Bracket Style
3203SR-3532	Waist shower grab rail new	Undersling

3203SR Shower Recess Grab Rail

3203SR-3532 Concealed Flange Shower Recess

- + Made to industry standards and of 304 grade stainless steel and supplied in a brushed stainless steel finish.
- + A one piece body that fits neatly into the corner of a shower recess.
- + Supplied with two free moving sliding brackets that can be positioned wherever the studs are located behind the shower recess.
- + The sliding brackets have a hole pre drilled in them, allowing a screw or rivet to be utilised to secure the two parts together.
- + The fixing points are in the corner of the shower and by the two sliding brackets, which gives the flexibility to position them where the studs are located, offering plenty of stability.
- + Measures 1000mm x 1000mm and is 32mm in diameter and can be trimmed to suit required size.
- + Supplied with two black plastic stop ends so if the item does need to be shortened, inserting the plugs on the cut end(s) keeps a neat and safe appearance.
- + For those concerned with obtaining an uninterrupted 270 degree of hand clearance, the option is to use a standard undersling (3922) in preference to the sliding rail brackets.
- + Another fitting option is to finish off the rail by using end brackets (N3908) if a return back to the wall is required.
- + Sold individually or in box quantities of 4.

The end bracket for the 3203SR model

Fixing for the 3203SR model

The end bracket for the 3203SR-3532 model

### Standard Shower Recess

### Concealed Flange Shower Recess

This waist high shower rail has been designed by Lencare in conjunction with home modification experts. The need to have a one piece unit was paramount when designing this item, as many services were putting two separate rails together, or using modular products to achieve a similar result. The new rail serves the purpose of ease of installation, as well as a much more pleasing end result for the user.

A variation on the 3203SR model, is known as 3203SR-3532. The difference between the two models is that this one uses undersling brackets, unlike the original. It offers all the same basic features such as size and benefits of the 3203SR model. It uses the same body, but the different brackets offer hand movement alternatives and perhaps advantages that may appeal in different situations. The brackets have allen key fixing and each bracket is supplied with the tightening key. It also uses the standard grab rail flange that offers five hole concealed fixing.

Fixing for the 3203SR-3532 model

- TUBES
- ELBOWS
- BENDS
- STRAIGHT ENDS
- STRAIGHT JOINERS
- HAND RAIL SUPPORTS
- TEE SECTIONS
- GRAB TOWEL RAIL OPTIONS
- ACCESSORIES

Highly  
recommended

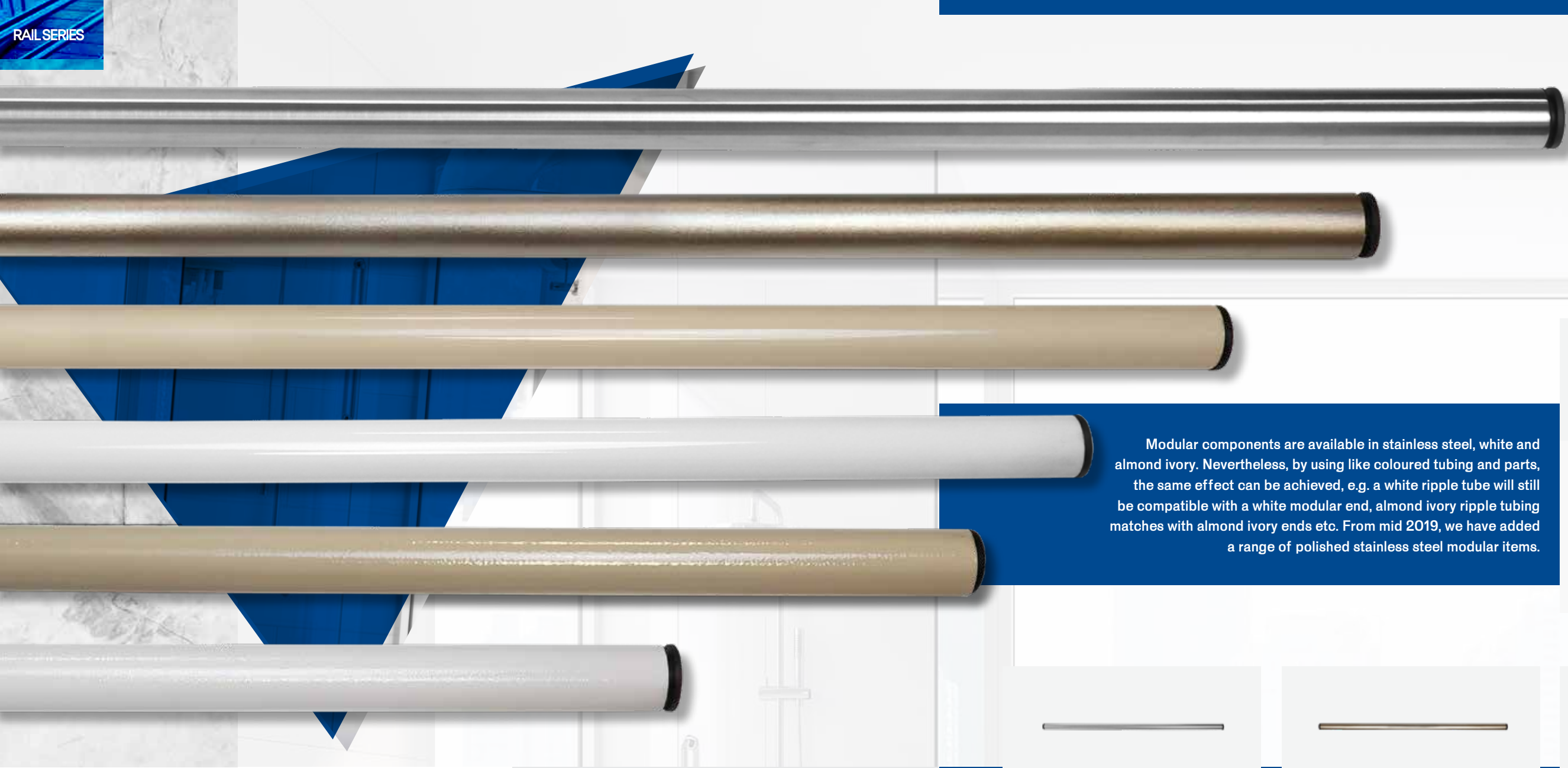
Lencare has offered a modular selection of products for many years now. The modular range offers a series of set lengths of 32mm tubing and a selection of related componentry, allowing you to create your own grab rails, either in the workshop or on site. This range has been embraced by all sections of the health care industry and is used extensively within the home modification market. It has proven its value over many years and is highly recommended by both builders & occupational therapists.

MODULAR  
GRAB RAIL



MODULAR





Modular components are available in stainless steel, white and almond ivory. Nevertheless, by using like coloured tubing and parts, the same effect can be achieved, e.g. a white ripple tube will still be compatible with a white modular end, almond ivory ripple tubing matches with almond ivory ends etc. From mid 2019, we have added a range of polished stainless steel modular items.



Brushed Stainless Steel

32mm	
Code	Size
3911	1000mm x 32mm
3912	2000mm x 32mm
3924	3000mm x 32mm



Polished Stainless Steel

32mm	
Code	Size
3911P	1000mm x 32mm
3912P	2000mm x 32mm



Peened Stainless Steel

32mm	
Code	Size
3913	1000mm x 32mm
3914	2000mm x 32mm



White

32mm	
Code	Size
3932W	1000mm x 32mm
3933W	2000mm x 32mm



White Ripple

32mm	
Code	Size
3934W-R	1000mm x 32mm
3935W-R	2000mm x 32mm



Almond Ivory

32mm	
Code	Size
3932A-I	1000mm x 32mm
3933A-I	2000mm x 32mm



Almond Ivory Ripple

32mm	
Code	Size
3934AI-R	1000mm x 32mm
3935AI-R	2000mm x 32mm

# TUBES

M O D U L A R

This product selection is the range of stainless steel tubing essential for the Lencare modular series. This tubing is designed to work with the modular componentry and is supplied in different lengths and finishes.

The Features:

- + Made of 304 grade stainless steel. All tubing is made to the industry standard of 32mm. Supplied in lengths of 1000, 2000 and 3000mm (in brushed stainless steel only).
- + These tubes can be cut to size by using the appropriate type of cutting blade, whether drop saw, angle grinder, tube cutter or hacksaw.
- + Sold in finishes to match the componentry of brushed stainless steel, polished stainless steel, white and almond ivory. There is also a peened stainless steel range of tubing available, which will work with the stainless steel modular fittings.
- + Sold individually or in box quantities of 10 or 20.





Elbow Ends

Elbow 40 Degree

Elbow 90 Degree

# ELBOWS

M O D U L A R

The Lencare modular series is a way to create a grab rail when the set lengths of grab rails are not usable in the required situation. Modular grab rails utilise a variety of parts with lengths of tubing and when cut to size and assembled, form a grab rail.

The range of products include basic elbow ends, bends, tee pieces, straight joiners, corner pieces and other parts and they combine with lengths of tubing that can all be modified on site. The majority of the range have the same round flanges as set size grab rails offer (76mm diameter) and offer concealed and some exposed fixings.

The standard offset from the wall is 70mm as it is with a standard grab rail. All modular components are supplied with stainless steel dress rings to cover up the joints between component and the rail.

This offers a neat, professional finish to the created rail. Made of 304 grade stainless steel, these parts come in a brushed stainless steel finish and arriving in late 2019 is a select range of polished stainless steel parts and tubing, to cater for changing tastes in the market place. Other finishes are white and almond ivory and all products have matching colour dress rings to suit.

Sold individually or in box quantities of 8, 10, 20 or 40.

## Standard Elbow Ends

The N3908 elbow ends are the cornerstone of the modular range of parts. These are standard 90 degree elbow ends with a round flange cover. Offers five hole fixing and is supplied with screws and plugs, giving a completely concealed appearance.

Code	Finish
N3908	Brushed Stainless Steel
N3908P	Polished Stainless Steel
N3908W	White
N3908A-I	Almond Ivory



## Corner Elbow Ends - Concealed

The N3927 elbow ends are a more recent addition to the modular range. They are a pair of 90 degree elbow ends but with a squared off flange and matching flange cover. Offers three hole fixing and is supplied with screws and plugs. It gives a completely concealed appearance. Always sold as a pair.

Code	Finish
N3927	Brushed Stainless Steel
N3927P	Polished Stainless Steel
N3927W	White
N3927A-I	Almond Ivory



## Corner Elbow Ends - Single Hole

The N3926 elbow ends are a pair of 90 degree elbow ends but with a narrow, single hole flange and no flange covers. They can match in with other existing exposed hardware within a bathroom and additionally, can be used in fixing when flange space is limited. Supplied with screws and plugs. Always sold as a pair.

Code	Finish
N3926	Brushed Stainless Steel
N3926P	Polished Stainless Steel
N3926W	White
N3926A-I	Almond Ivory



## Corner Elbow Ends - Exposed

The N3915 elbow ends are a pair of 90 degree elbow ends but with a squared off flange and no flange covers. The primary reason for this is to match in with other existing exposed hardware within a bathroom. Offers two hole fixing and is supplied with screws and plugs. Always sold as a pair.

Code	Finish
N3915	Brushed Stainless Steel
N3915P	Polished Stainless Steel
N3915W	White
N3915A-I	Almond Ivory



## Elbow 90 Degree Corner Support

The N3910 is a 90 degree horizontal corner elbow bracket. Due to manufacturing constraints, it cannot be supplied with a concealed flange cover. The flange is a right angled design with 3 hole screw fixing. It is supplied with screws and plugs.

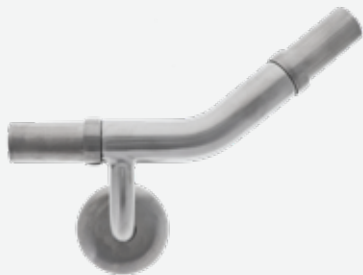
Code	Finish
N3910	Brushed Stainless Steel
N3910P	Polished Stainless Steel
N3910W	White
N3910A-I	Almond Ivory



Elbow 40 Degree - LH

The N3918 elbow has a 40 degree offset angle with a concealed round flange underneath the horizontal of the unit. The undersling is on the right hand side of the product. Offers five hole fixing and is supplied with screws and plugs. It gives a completely concealed appearance.

Code	Finish
N3918	Brushed Stainless Steel
N3918P	Polished Stainless Steel
N3918W	White
N3918A-I	Almond Ivory



Elbow 40 Degree - RH

The N3909 elbow has a 40 degree offset angle with a concealed round flange underneath the horizontal of the unit. The undersling is on the left hand side of the product. Offers five hole fixing and is supplied with screws and plugs. It gives a completely concealed appearance.

Code	Finish
N3909	Brushed Stainless Steel
N3909P	Polished Stainless Steel
N3909W	White
N3909A-I	Almond Ivory



Elbow 90 Degree Vertical Centred - LH

The N3920 elbow is basically the same product as the N3917 but with the notable difference of the undersling bracket being positioned differently. This bracket is more centred towards a corner stud and with the five fixing holes, it gives ample opportunity to secure screws into the stud. It is a 90 degree vertical bend and is supplied with screws and plugs. It gives a completely concealed appearance.

Code	Finish
N3920	Brushed Stainless Steel
N3920P	Polished Stainless Steel
N3920W	White
N3920A-I	Almond Ivory



Elbow 90 Degree Vertical Centred - RH

The N3919 elbow is basically the same product as the N3904 but with the notable difference of the undersling bracket being positioned differently. This bracket is more centred towards a corner stud and with the five fixing holes, it gives ample opportunity to secure screws into the stud. It is a 90 degree vertical bend and is supplied with screws and plugs. It gives a completely concealed appearance.

Code	Finish
N3919	Brushed Stainless Steel
N3919P	Polished Stainless Steel
N3919W	White
N3919A-I	Almond Ivory



Elbow 90 Degree Horizontal - LH

The N3916 elbow is a 90 degree horizontal bend with a concealed round flange underneath the horizontal of the unit. The undersling is on the right hand side of the product. Offers five hole fixing and is supplied with screws and plugs. It gives a completely concealed appearance.

Code	Finish
N3916	Brushed Stainless Steel
N3916P	Polished Stainless Steel
N3916W	White
N3916A-I	Almond Ivory



Elbow 90 Degree Vertical - LH

The N3917 elbow is a 90 degree vertical bend with a concealed round flange underneath the horizontal of the unit. The undersling is as far to the right hand side of the product. Offers five hole fixing and is supplied with screws and plugs. It gives a completely concealed appearance.

Code	Finish
N3917	Brushed Stainless Steel
N3917P	Polished Stainless Steel
N3917W	White
N3917A-I	Almond Ivory



Elbow 90 Degree Horizontal - RH

The N3903 elbow is a 90 degree horizontal bend with a concealed round flange underneath the horizontal of the unit. The undersling is on the left hand side of the product. Offers five hole fixing and is supplied with screws and plugs. It gives a completely concealed appearance.

Code	Finish
N3903	Brushed Stainless Steel
N3903P	Polished Stainless Steel
N3903W	White
N3903A-I	Almond Ivory

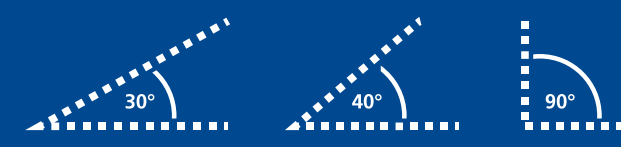


Elbow 90 Degree Vertical - RH

The N3904 elbow is a 90 degree vertical bend with a concealed round flange underneath the horizontal of the unit. The undersling is as far to the left hand side of the product. Offers five hole fixing and is supplied with screws and plugs. It gives a completely concealed appearance.

Code	Finish
N3904	Brushed Stainless Steel
N3904P	Polished Stainless Steel
N3904W	White
N3904A-I	Almond Ivory





### Bend 30 Degree

The modular N3902-30 is a 30 degree bend and offers a required variation from the standard 40 degree model. As it fits between two pieces of tubing, no screws are required.

Code	Finish
N3902-30D	Brushed Stainless Steel
N3902-30DP	Polished Stainless Steel
N3902-30DW	White
N3902-30DA-I	Almond Ivory



### Bend 40 Degree

The modular series has a selection of offset bends. This N3902 is a 40 degree bend. As it fits between two pieces of tubing, no screws are required.

Code	Finish
N3902	Brushed Stainless Steel
N3902P	Polished Stainless Steel
N3902W	White
N3902A-I	Almond Ivory



### Bend 90 Degree

The modular bend N3901 is a 90 degree bend. As it fits between two pieces of tubing, no screws are required.

Code	Finish
N3901	Brushed Stainless Steel
N3901P	Polished Stainless Steel
N3901W	White
N3901A-I	Almond Ivory

	Brushed Stainless Steel
	Polished Stainless Steel
	White
	Almond Ivory

## BENDS

M O D U L A R

Bend 30 Degree

Bend 40 Degree

Bend 90 Degree

This product selection is the range of bends essential for the Lencare modular series. These bends are designed to work with the modular componentry and is supplied in different angles and finishes.

Sold individually or in box quantities of 10, 20 or 40.



- Standard
- Long
- Elongated Flange



Straight End - Standard

The N3907 is a standard straight end with a concealed round flange. It has an overall length of 150mm. Offers five hole fixing and is supplied with screws and plugs. It gives a completely concealed appearance.

Code	Finish
N3907	Brushed Stainless Steel
N3907P	Polished Stainless Steel
N3907W	White
N3907A-I	Almond Ivory



Straight End - Long

The N3907EXT is an extended straight end with a concealed round flange. It has an overall length of 220mm. Offers five hole fixing and is supplied with screws and plugs. It gives a completely concealed appearance.

Code	Finish
N3907EXT	Brushed Stainless Steel
N3907EXTP	Polished Stainless Steel
N3907EXT-W	White
N3907EXT-A-I	Almond Ivory



Straight End - Elongated Flange


The N3928 is a unique product that gives options as a straight end. Specifically designed to fit hard into a corner and fix to the corner stud. It has a standard 70mm offset from the wall. It has other uses too, one in particular where it can fix to the floor if extra stability is required when fabricating modular products. Flange base measures 78 x 109mm. Offers five hole fixing and has a purpose made concealed flange. Supplied with screws and plugs. It gives a completely concealed appearance.

Code	Finish
N3928	Brushed Stainless Steel
N3928P	Polished Stainless Steel
N3928W	White
N3928A-I	Almond Ivory

Brushed Stainless Steel

Polished Stainless Steel

White

Almond Ivory

STRAIGHT  
ENDS  
M O D U L A R

This product selection is the range of straight ends essential for the Lencare modular series. They are designed to work with the modular componentry and is supplied in different models & finishes.

Sold individually or in box quantities of 10 or 20.

Actual product colours may vary from colours shown.

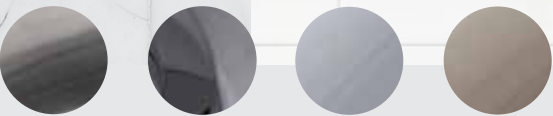




# STRAIGHT JOINERS

M O D U L A R

Sold individually or in box quantities of 10, 20 or 40.



Actual product colours may vary from colours shown.



## Straight Joiner - Standard

The N3906 is a standard straight joining piece with a concealed round flange. Offers five hole fixing and is supplied with screws and plugs. It gives a completely concealed appearance.

Code	Finish
N3906	Brushed Stainless Steel
N3906P	Polished Stainless Steel
N3906W	White
N3906A-I	Almond Ivory



## Straight Joiner - Less Undersling

The N3906-LU is a standard straight joining piece without any undersling.

Code	Finish
N3906-LU	Brushed Stainless Steel
N3906-LUP	Polished Stainless Steel
N3906-LUW	White
N3906-LUA-I	Almond Ivory

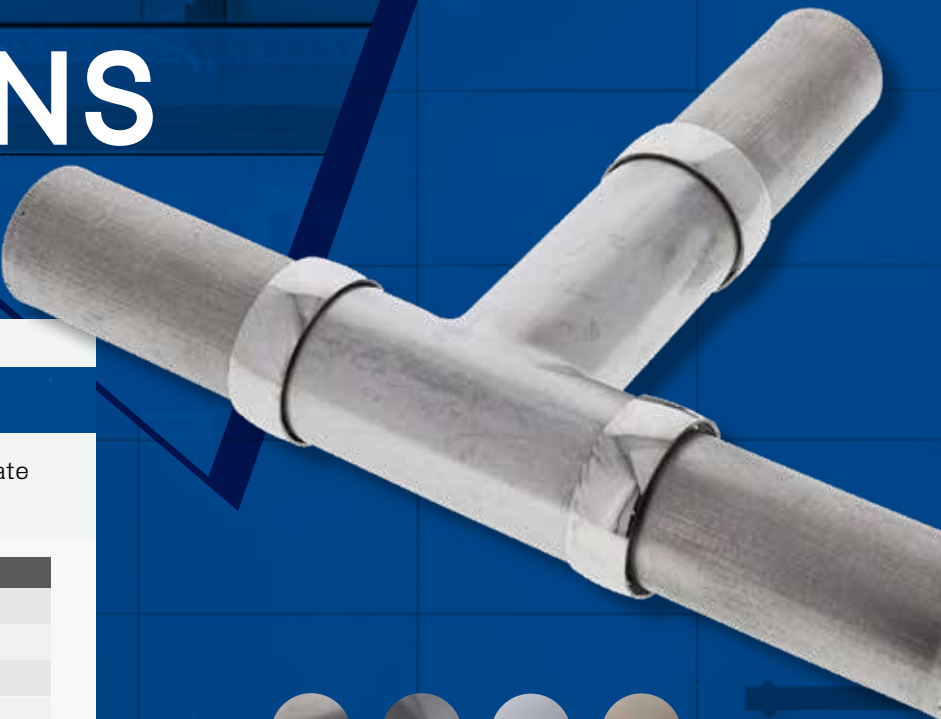
# TEE SECTIONS

M O D U L A R

## Tee Section

The N3905 is a tee piece for more intricate modular designs.

Code	Finish
N3905	Brushed Stainless Steel
N3905P	Polished Stainless Steel
N3905W	White
N3905A-I	Almond Ivory



Actual product colours may vary from colours shown.

# HAND RAIL SUPPORTS

M O D U L A R



## Hand Rail Support - Concealed

The 3922 is a bracket designed to fit underneath the modular tube. Its cupped design allows the tube to neatly rest into it. It has two fixing screw holes which allow you to fit it securely to the tube, whether by screws or pop rivets. Has a round concealed flange and offers five hole fixing. Supplied with screws and plugs. It gives a completely concealed appearance.

Code	Finish
3922	Brushed Stainless Steel
3922P	Polished Stainless Steel
3922W	White
3922A-I	Almond Ivory



# TOWEL GRAB RAIL

M O D U L A R

Finally a solution to overcome the problem of placing a towel over a grab rail. The Lencare towel grab rail range provides options on either existing or new grab rail installations.

This idea has been developed by home modification installers to solve a recurring problem that has been frustrating for all concerned.

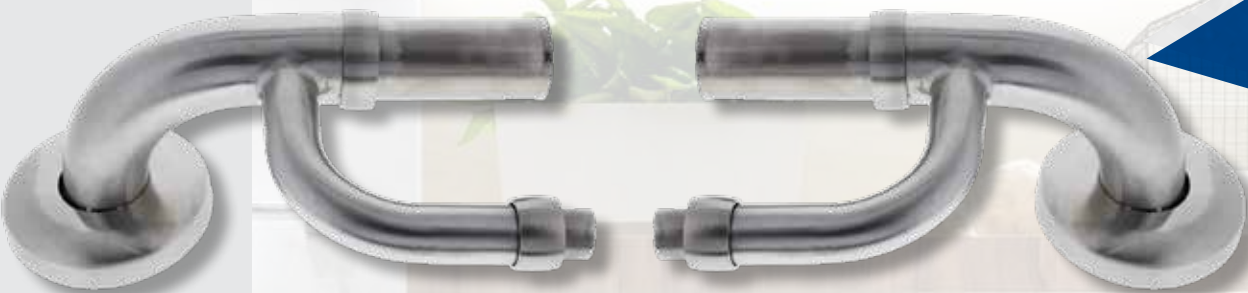
At times, customers have wanted a towel rail replaced with a grab rail. Although a simple enough request, the whole purpose of the install has been diluted by the fact that the client stays with their old habit and now puts the towel over the grab rail, which has potential risks involved.

Lencare in conjunction with home modification installers have manufactured a solution, which is to have a towel rail underneath the grab rail. It can be fitted onto either a new or previous install. It can also be fitted to stainless steel or aluminium tube.

Originally these were made as a bracket only to fit underneath rails. But market requests saw the range expand to include a combination top and bottom rail set, which allows for a new installation option and offers an easier fitting alternative to the original bracket.



TGRM-19  
Towel Grab Rail Ends (pair)



N3908-TGR  
Combination Elbow End



TGRT-1000 | TGRT-2000 - Tube 19mm Diameter 1000mm or 2000mm

### The Features:

- + Two model options to choose from. The original bracket only that fits underneath any existing grab rail. The second option is a combination set of elbow ends with the towel rail component already manufactured into the ends. This provides an easier fitting option. Both brackets and combination ends are sold in pairs.
- + Made to industry standards and of 304 grade stainless steel.
- + Sold as a pair of elbow ends with two ends per packet, dress rings included.
- + Works with 19mm stainless steel tubing (1.5mm thickness for added strength). Tubing comes in lengths of 1000 or 2000mm.
- + Fits together like any other modular rail install, cut the tubing to the desired length, use adhesive or a rivet/screw to prevent the rail from spinning when installed.
- + For the pair of ends only, fit by using one rivet or screw to each bracket end (4.5mm hole diameter size) and then secure to the grab rail.
- + Each bracket end has a cupped design so as the tubing sits neatly into them.
- + Available in finishes of brushed and polished stainless steel.
- + Sold individually or in box quantities of 10 or 20.

### Model Details

Brushed Stainless Steel	
Code	Description
TGRM-19	Towel Grab Rail Ends per pair
N3908-TGR	Combination Elbow End / TGR
Polished Stainless Steel	
Code	Description
TGRM-19P	Towel Grab Rail Ends per pair
N3908-TGRP	Combination Elbow End / TGR

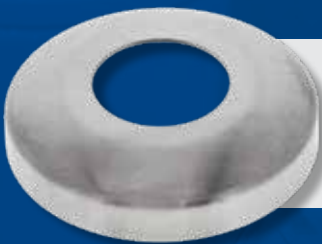
### Tubing

Brushed Stainless Steel	
Code	Description
TGRT-1000	Tube 19mm Diameter 1000mm
TGRT-2000	Tube 19mm Diameter 2000mm
Polished Stainless Steel	
Code	Description
TGRT-1000P	Tube 19mm Diameter 1000mm
TGRT-2000P	Tube 19mm Diameter 2000mm

## Accessories

### for modular collection

- + Square or round model flanges
- + Work with the modular componentry
- + Available in finishes of brushed stainless steel.



N3-FC-RND  
Round Flange Cover  
32mm



N3-FC-SQ  
Square Flange  
Cover 32mm

This product is a perfect match for the Corner Elbow End Concealed (N3927) --- Page 31



IN STOCK READY TO ORDER  
MADE TO ORDER RAILS

# SPECIAL APPLICATION

G R A B R A I L

## Special range

Lencare makes a special range of stainless steel bannister rails for many different purposes. These rails are designed to fit into commercial areas or private dwellings. These rails can be used on exterior steps, internally for bathroom areas, around toilets and just about anywhere a safety rail is required.

Whilst most applications require a 32mm diameter rail, we can supply alternatives of 38mm or 25mm in these same designs. Most rails are supplied with a five hole concealed fixing flange, as used on our standard grab rails. In circumstances where a round flange is not suitable, Lencare can offer different fixing options, such as exposed round or exposed rectangular flanges.

Lencare rails are made from 304 grade stainless steel. The option to use a more pure 316 grade stainless steel can be offered if the specific job requires it. Polished stainless steel rails are available upon request and Lencare can offer a powder coating service. Anti slip rails can also be ordered.

# IN STOCK READY TO ORDER

## SPECIAL APPLICATION

As an alternative to the made to order rails, Lencare offers customers various rails with set measurements. These rails are generally kept in stock and can offer a useful alternative if there are pressing time issues for the job required and the sizing is not critical for the install.



A

### Horizontal Shower Rail

- ⊕ Made to industry standards and of 304 grade stainless steel.
- ⊕ Size: 800mm x 900mm x 70mm.
- ⊕ Both U819 & U820 models have the underslung on the 900mm side.
- ⊕ 32mm diameter with concealed fixing.
- ⊕ Available in reverse model.

B

### L Shaped Floor Mounted

- ⊕ Made to industry standards and of 304 grade stainless steel.
- ⊕ Size: 800mm x 750mm.
- ⊕ 32mm diameter with concealed fixing.

### Ambulant Right Angled

- ⊕ Made to industry standards and of 304 grade stainless steel.
- ⊕ Size: 450mm x 450mm.
- ⊕ 32mm diameter with concealed fixing.
- ⊕ Suits left or right hand installation.

Brushed Stainless Steel	
Model Details	
Code	Description
U819	Horizontal - 900mm (A) x 800mm (B)
U820	Horizontal Reverse - 900mm (B) x 800mm (A)
U870	L Shaped Floor Mounted
U871	U Shaped Floor Mounted
AMB450	Ambulant Right Angled (previously MLR112)

### U Shaped Floor Mounted

- ⊕ Made to industry standards and of 304 grade stainless steel.
- ⊕ Size: 800mm x 800mm x 800mm.
- ⊕ 32mm diameter with concealed fixing.





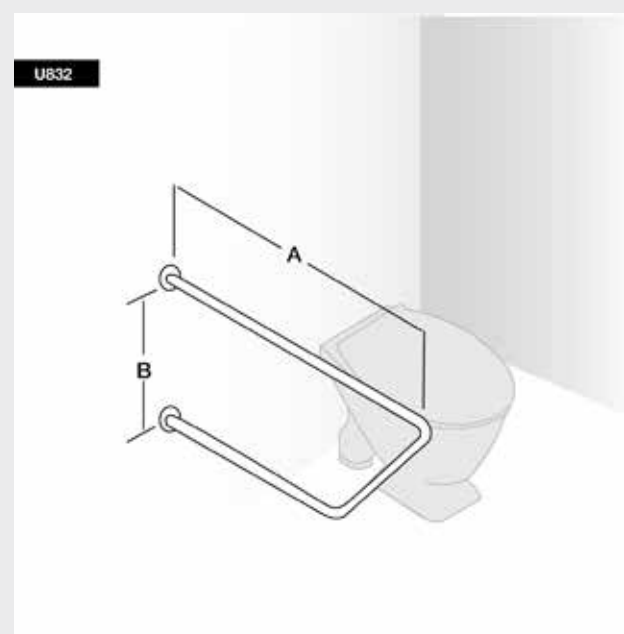
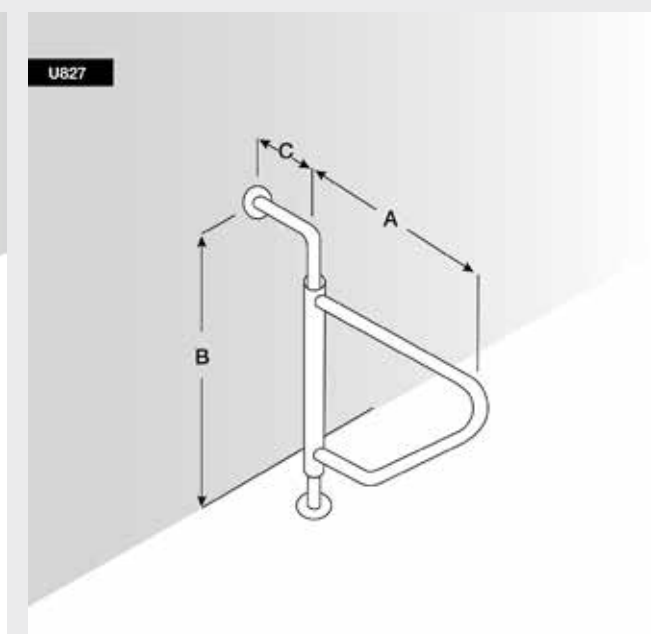
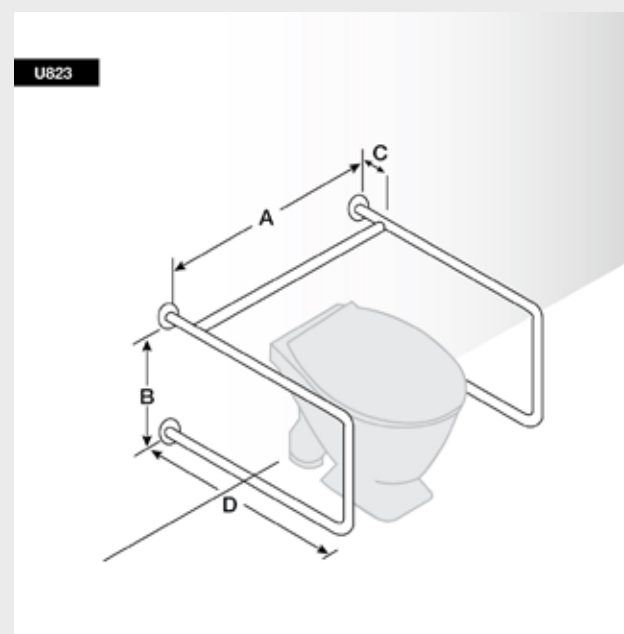




# for toilets

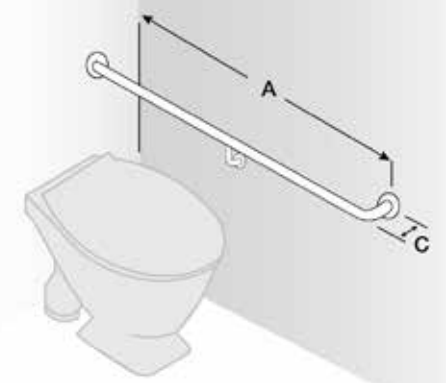
- ⊕ Made to industry standards and of 304 grade stainless steel.
- ⊕ Brushed stainless steel finish

any size  
any shape

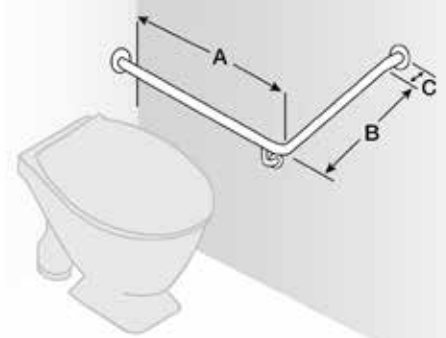




U851  
U851A Opposite Hand



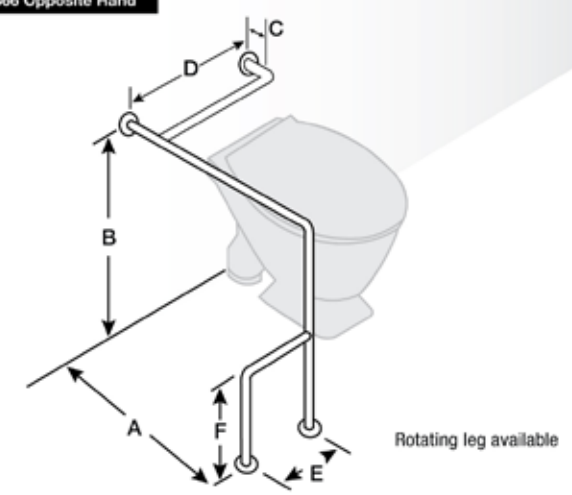
U852  
U853 Opposite Hand



U863  
U864 Opposite Hand



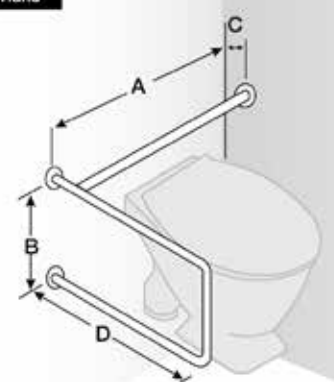
U865  
U866 Opposite Hand



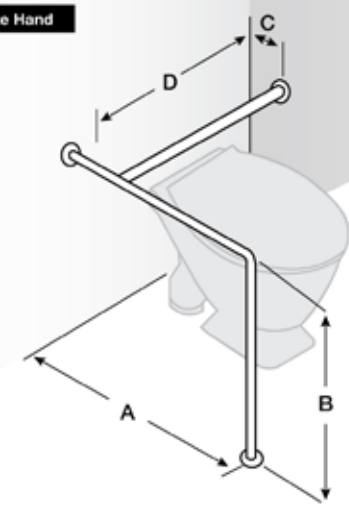
U854  
U855 Opposite Hand



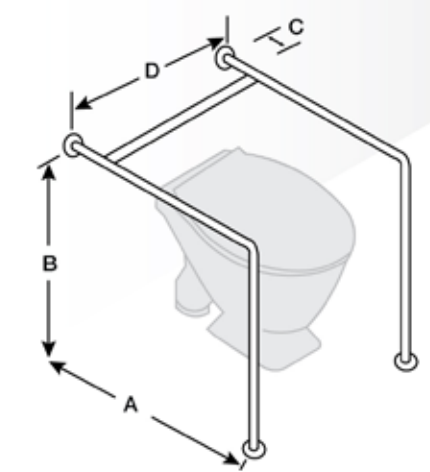
U856  
U857 Opposite Hand



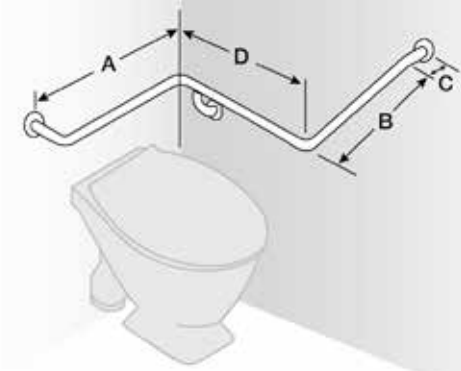
U867  
U868 Opposite Hand



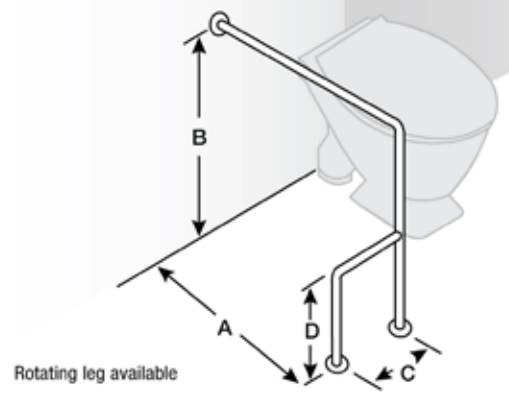
U869



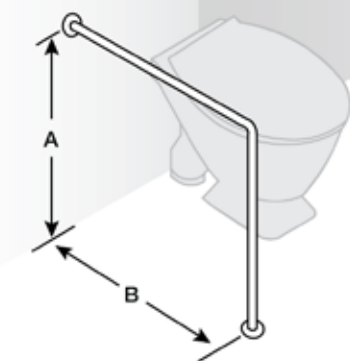
U859  
U860 Opposite Hand



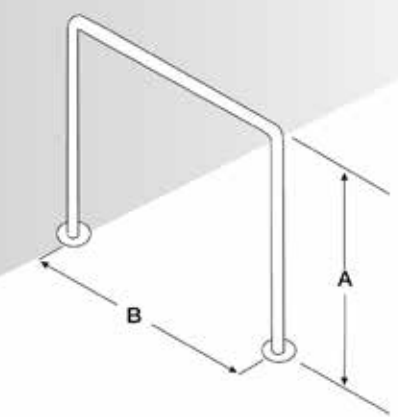
U861  
U862 Opposite Hand



U870

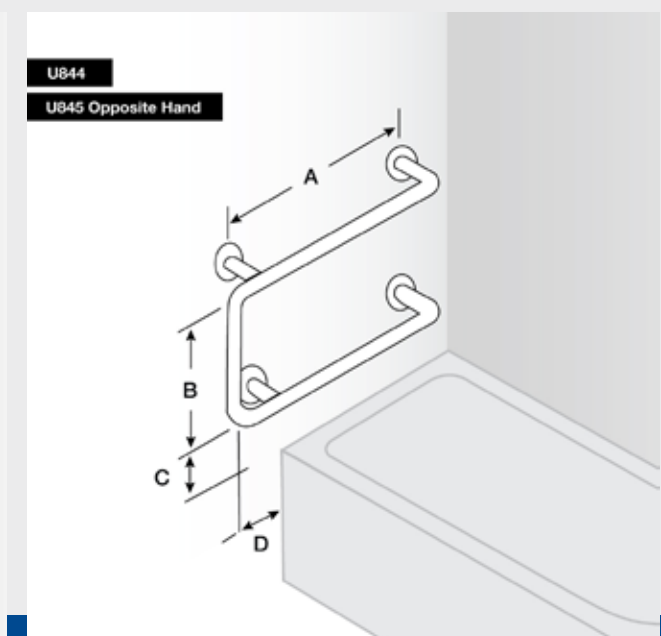
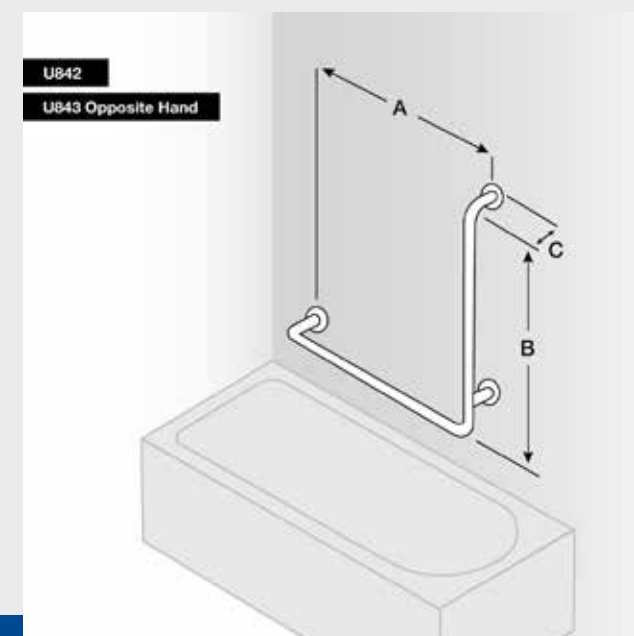
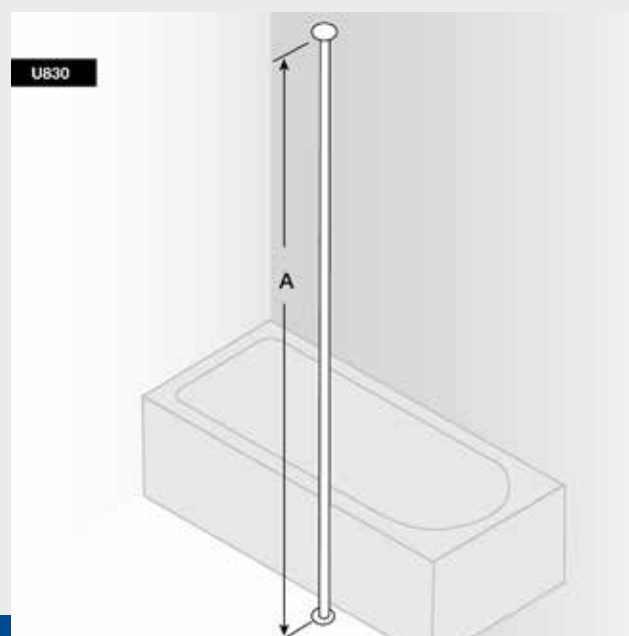
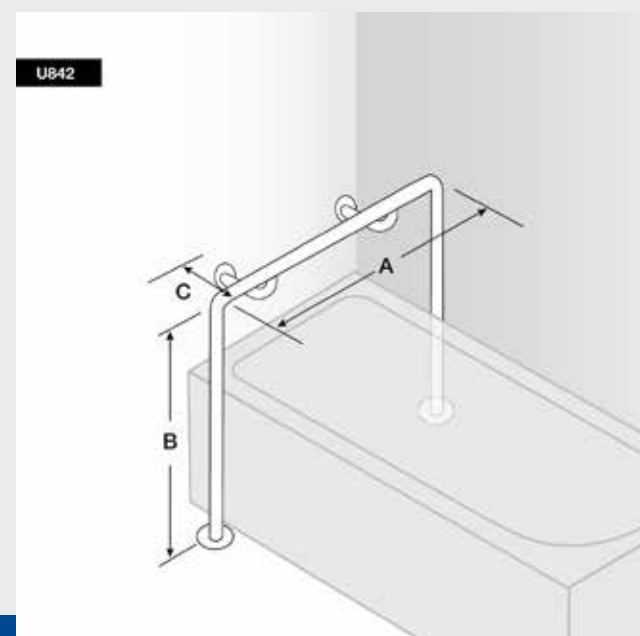
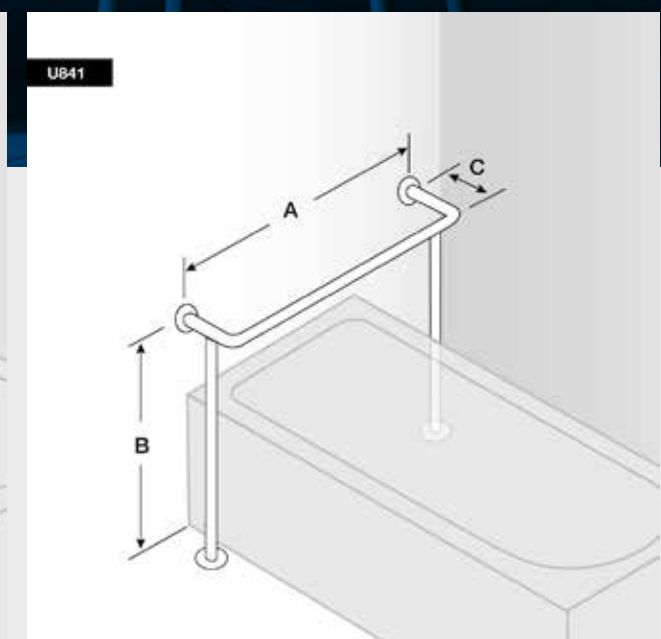
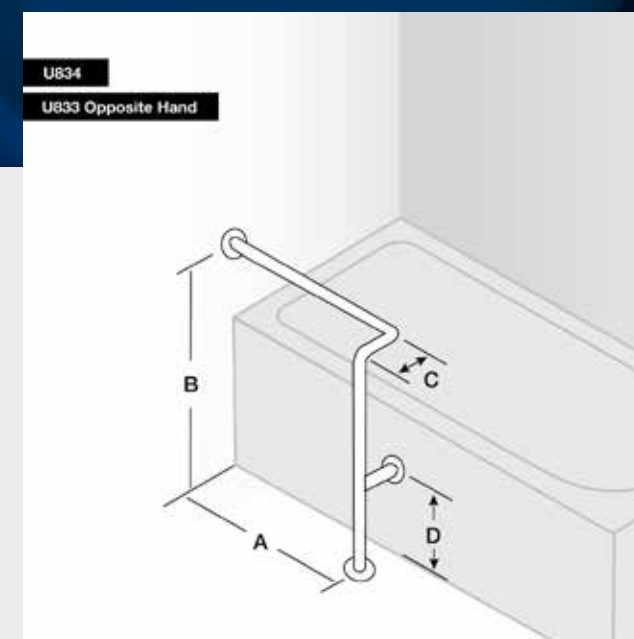
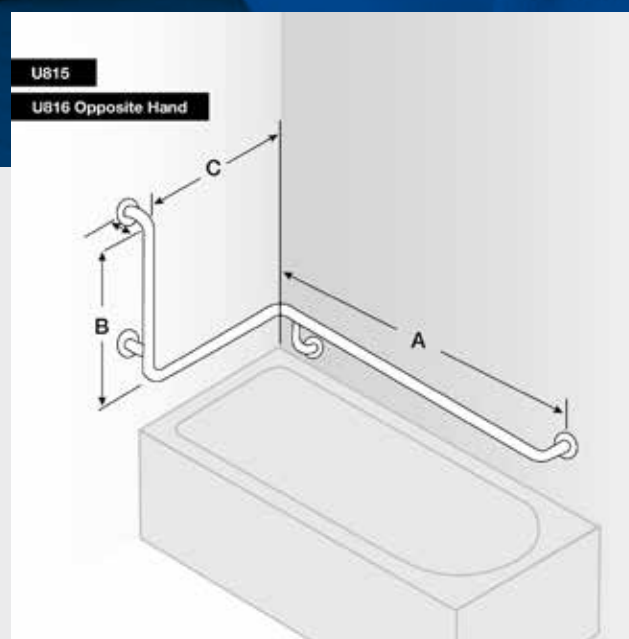


U871



# for bathtubs

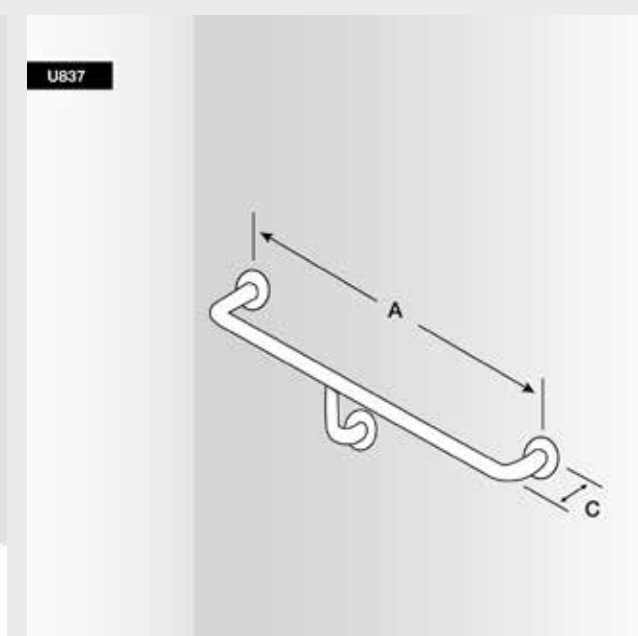
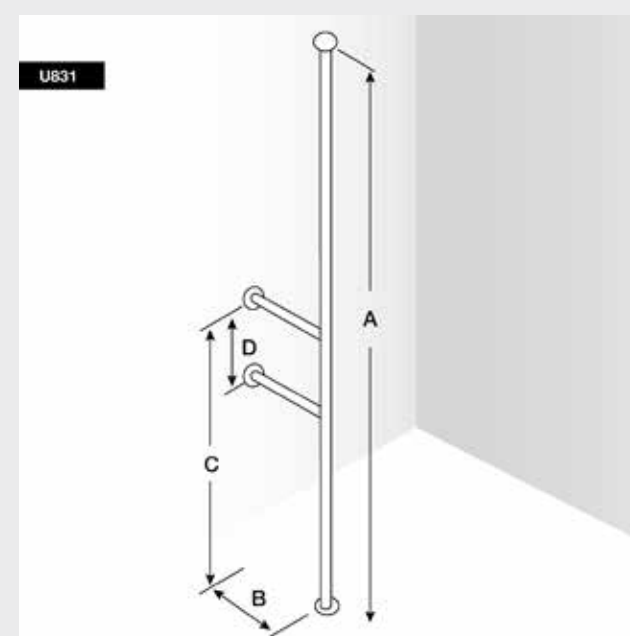
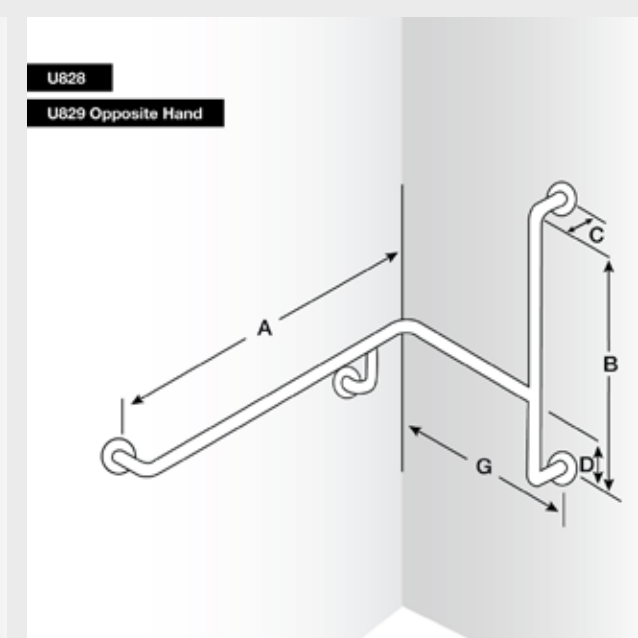
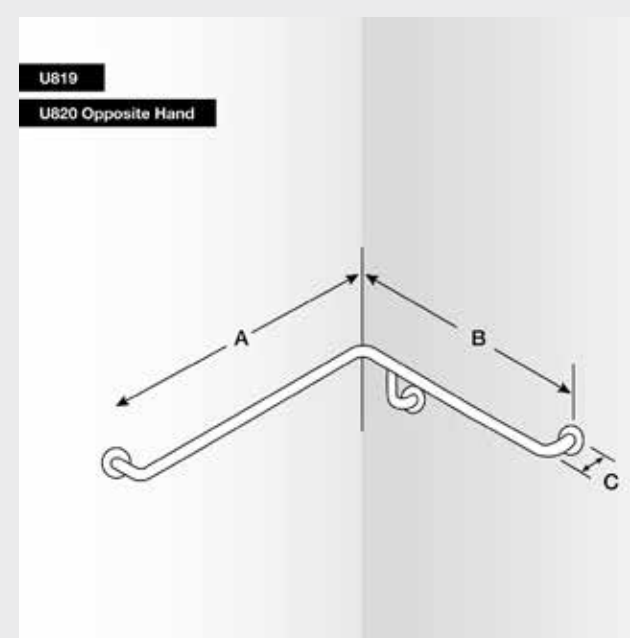
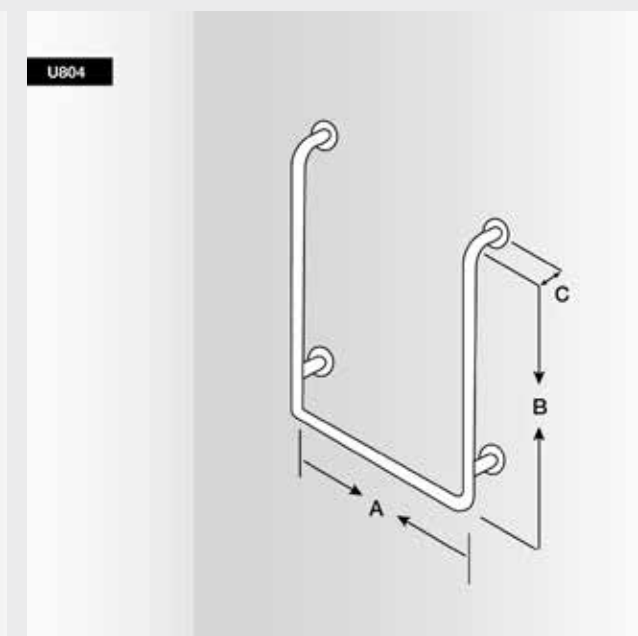
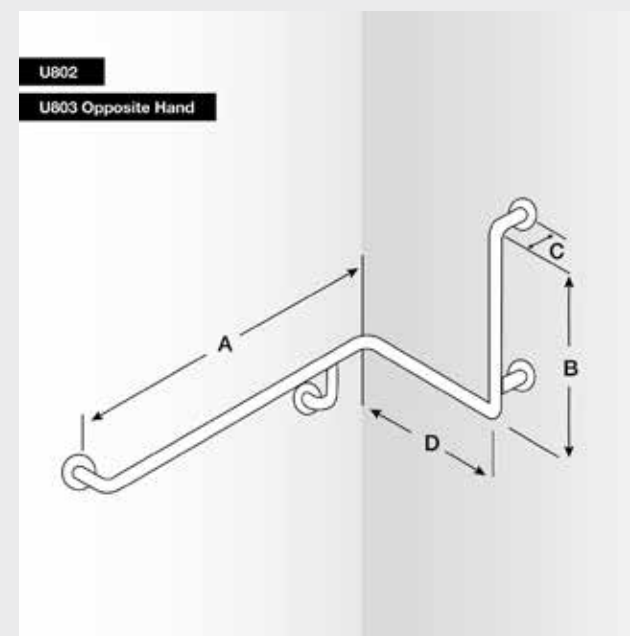
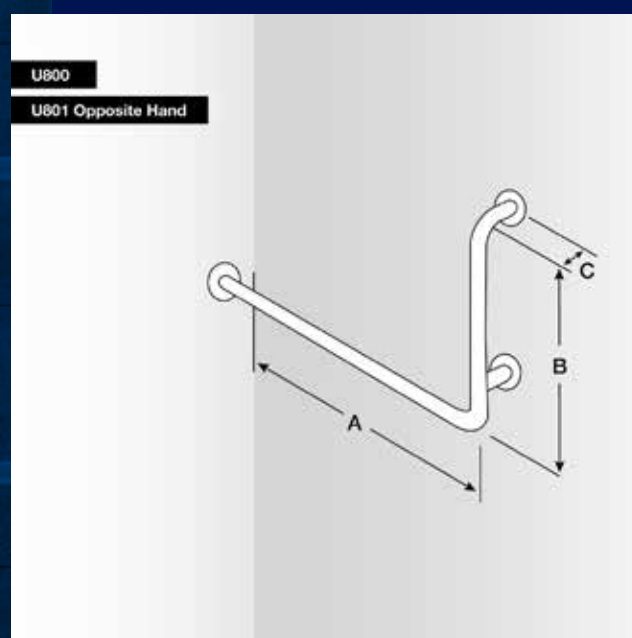
- ⊕ Made to industry standards and of 304 grade stainless steel.
- ⊕ Various models available
- ⊕ Brushed stainless steel finish

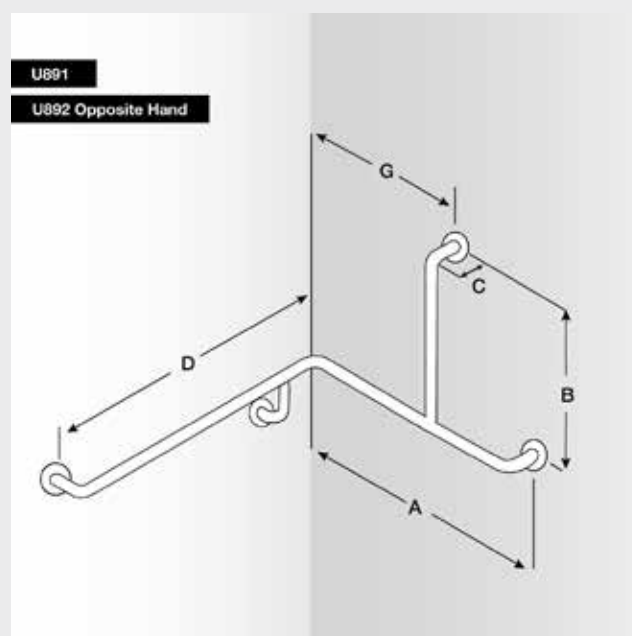
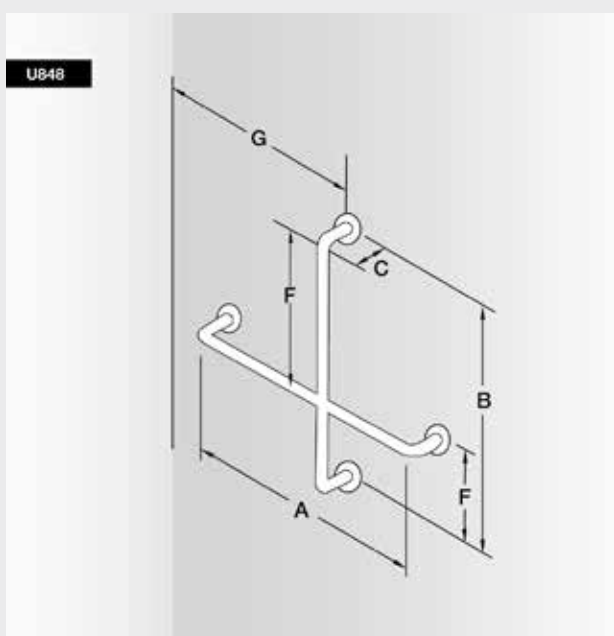
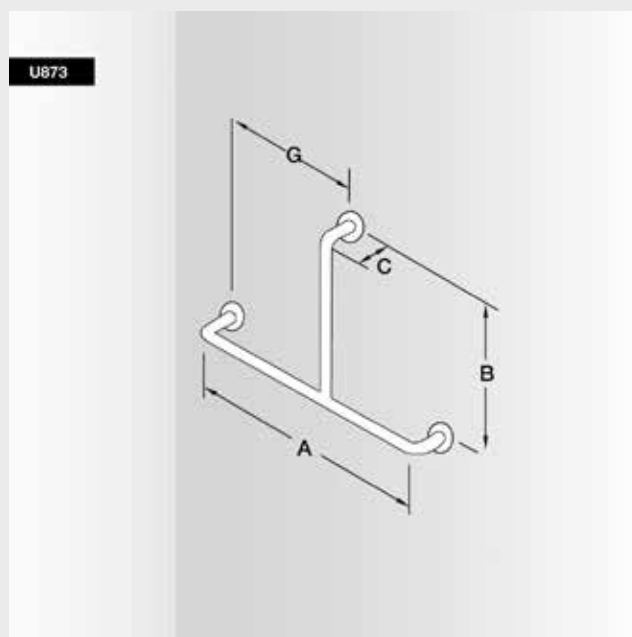
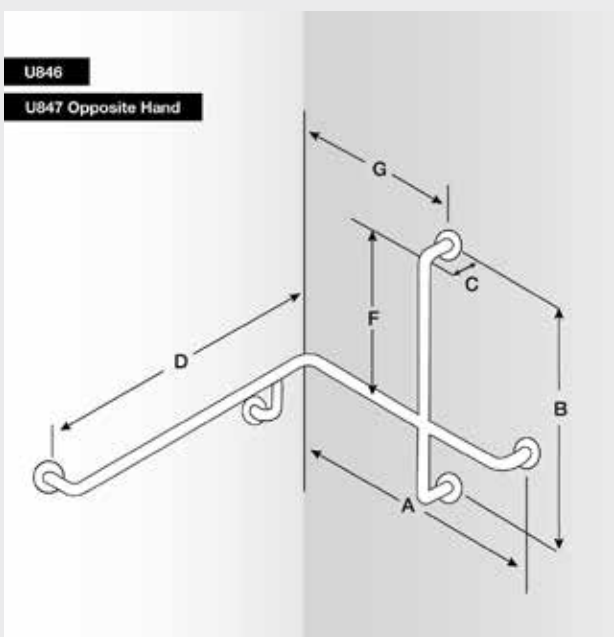
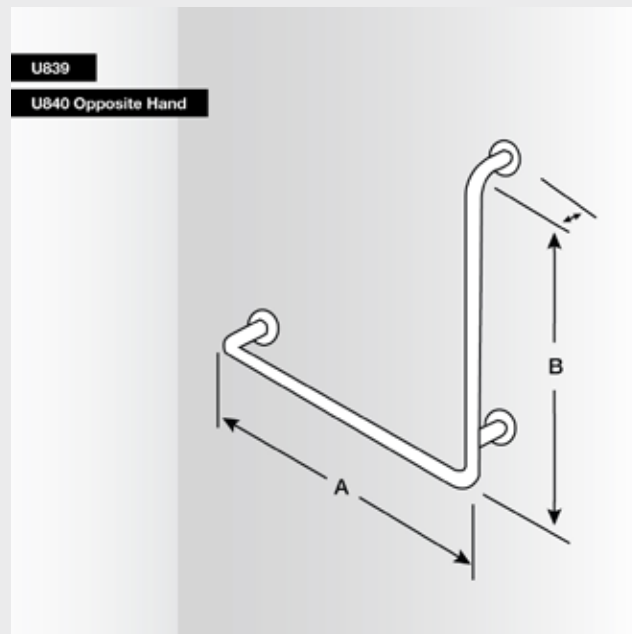
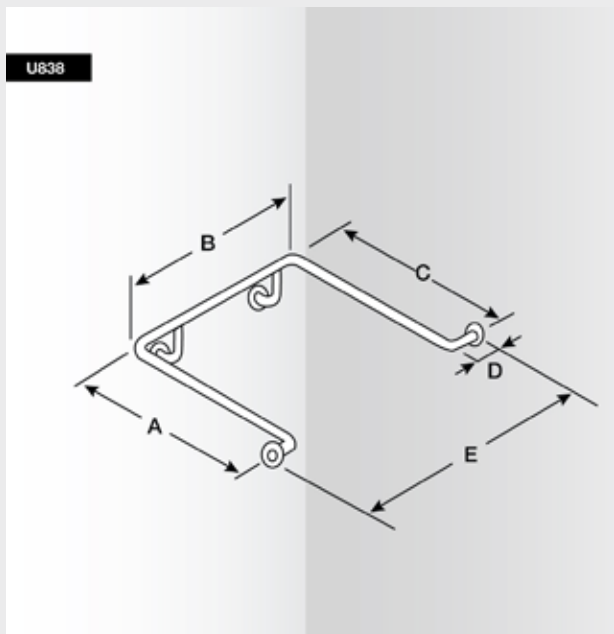




# for showers

- ⊕ Made to industry standards and of 304 grade stainless steel.
- ⊕ Various models available
- ⊕ Brushed stainless steel finish





online  
shopping  
now available



[www.lencare.com.au](http://www.lencare.com.au)



BRACKETS

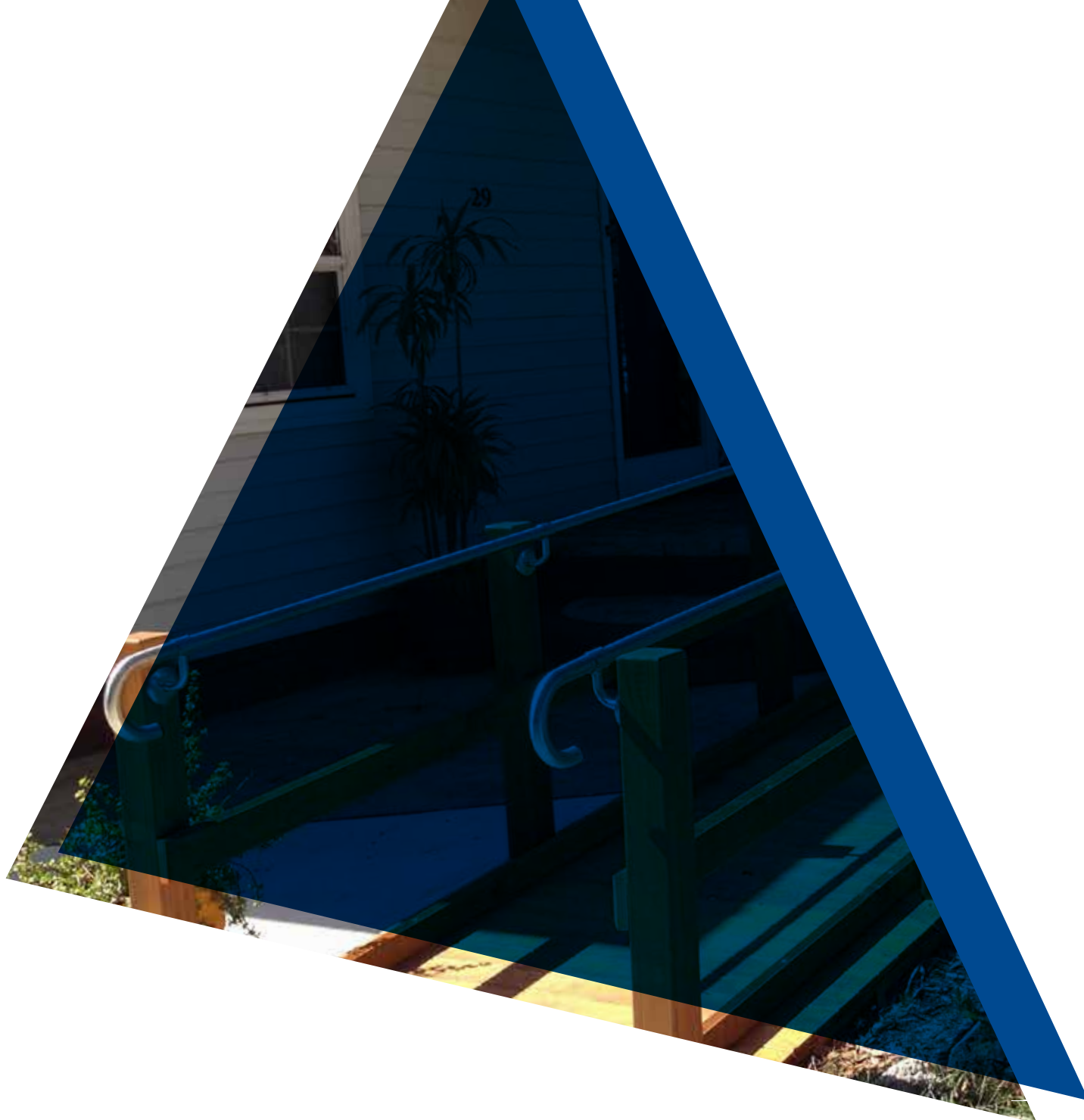
RETURN SET

KNUCKLE JOINT

TUBES

HOOK ENDS

BENDS



# EXTERNAL RAMP RAILS

R A I L S E R I E S

## Practical & effective

The Lencare outdoor ramp rail system gives the builder the opportunity to create a stainless steel ramp in a short period of time. Using the stainless steel lengths of tubing in combination with the practical pieces of the range, it is possible to build an external ramp rail system that is aesthetically pleasing and highly practical.

Lencare now provides this range which is a growing trend. It offers the advantage of building a rail system on site, in preference to lugging parts of galvanised tube to a site only to discover that some alteration needs to be done and then having to return to the workshop to finish it off. The practicality of the system is compelling.

The worth of this product lays in the neat appearance, ease to construct and in the value for money it presents. Its neat finish appeals to end users and is visually pleasing. All products are 32mm diameter and in a brushed stainless steel finish. Sold individually or in a box quantities of 10 or 20.



EXTERNAL RAMP RAILS





# BRACKETS

## RAMP RAILS



### External Ramp Corner Bracket

An external 90 degree corner for ramp rails.  
Available in brushed stainless steel.

Code	Description
N3931	External Ramp Corner



### Top Fixing 90 Degree Elbow

This bend fits atop of a post and creates a 90 degree corner. Available in brushed stainless steel.

Code	Description
LMR44	Top Fixing 90° Elbow



N3930

### Internal Ramp Corner Bracket

An internal 90 degree corner for ramp rails.  
Available in brushed stainless steel.

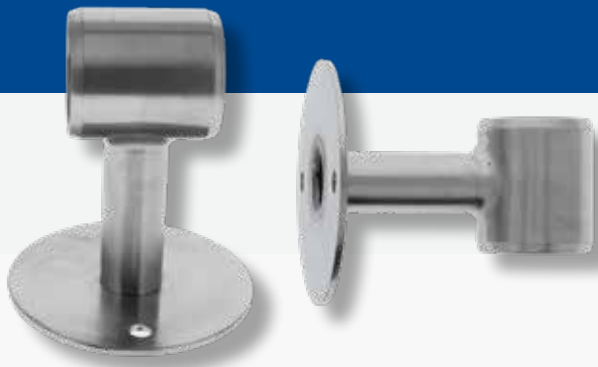
Code	Description
N3930	Internal Ramp Corner



### Top Fix Bracket

This bracket fits atop a post, allowing the tubing to pass through, offering a top rail fitting system.  
Available in brushed stainless steel.

Code	Description
LMR39	Top Fix Bracket



### Undersling Support Bracket

A streamlined rail fixing bracket that has a smooth looking design, five hole concealed fixing to the post and allen key front fit securing. It also has bevelled edges on each side of the bracket that allows a smooth continuation of hand movement along the passage of a rail length. Provided each time with the tightening key.

Code	Description
3532-1	Undersling Support Bracket



visually  
pleasing



# RETURN SET

RAMP RAILS



The Lencare ramp rail series has a product selection of return sets, which allows for rail continuity when turning a corner. Options are shown below.

## Ramp Rail Return Set

A two part product that can be installed either as a loop around a post or even as an "S" offset. Supplied with two undersling fixing-through brackets. These brackets offer front fixing allen key securing to the rail, bevelled edges for smooth hand traverse and a five hole concealed fixing plate to the post.

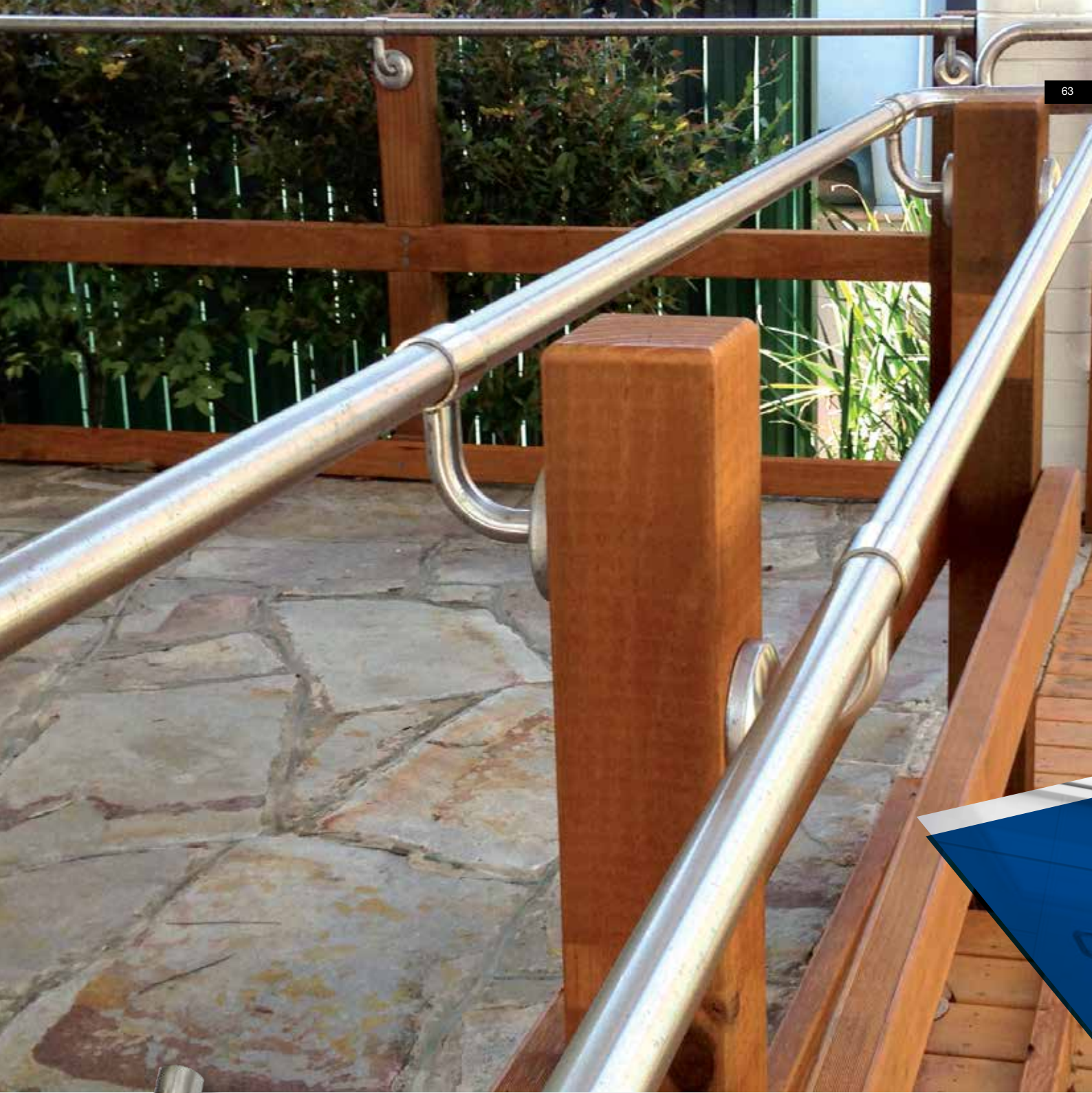
Code	Description
LMR45	Return Set



## Ramp Rail Return Half Set

As per the LMR45 return set, this is sold as a half set if only one of the pieces is required. It saves having to separate the full sets and then being left with incomplete sets when on site. Supplied with one undersling fixing through bracket.

Code	Description
LMR45-1	Return Half Set



## Ramp Rail Return Extended Half Set

This part is an extended 1000mm half return set. In situations where the landing on a ramp is larger than the width of the ramp, it offers a neater fitting option by allowing trimming to the required length, rather than making and patching up an additional length to a half or full return set. Any excess tubing can be used in future jobs or modular installs at a later date. Provided with one undersling fixing-through bracket.

Code	Description
LMR45-1EXT	1000mm Extended Half Set







# KNUCKLE JOINT

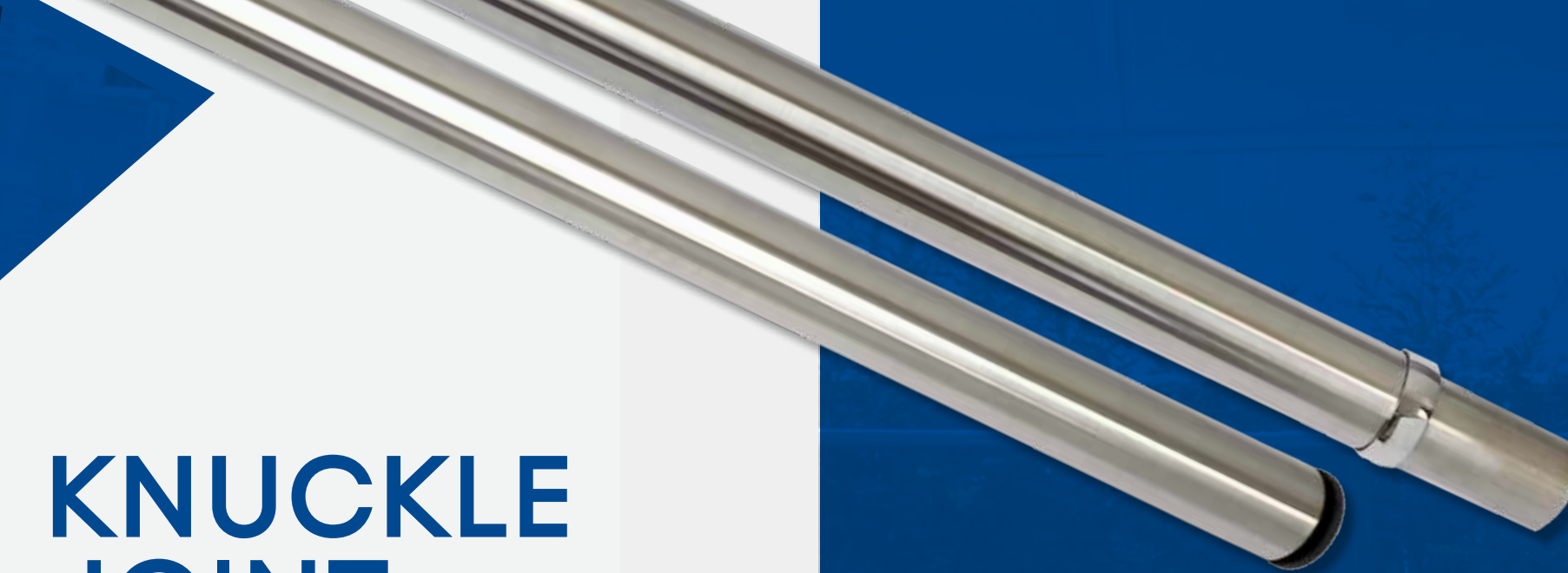
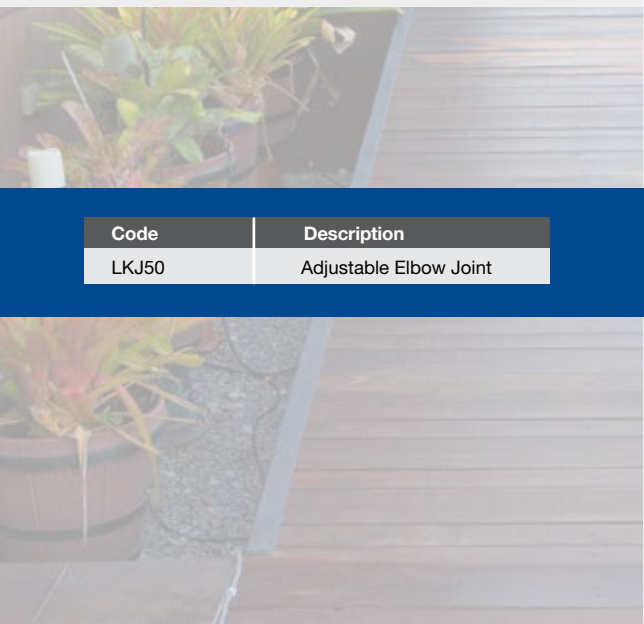
R A M P R A I L S

This item allows the installer to create angles of up to 90 degrees when working with 32mm tubing. It can be used on steps, ramps and any other situation where the need to create an angle is required. It's a two piece design that has three tightening points. With the rail positioned on the knurled section, securing the rail is achieved by tightening each half. Each half works independently to expand the split piece wedge. The allen key design in the centre is used to tighten the joint at the selected angle.

Built in consultation with home modification experts, this product offers a "gooseneck" design that has a split insert piece with a knurled grip designed to bite the tubing and create a secure fit. The nature of this product is far more ideal than other designs as it can be adjusted on site.

Incorporated within the design is a built in dress ring which will hide the cut end of the tube, thus offering a neater look and safer rail for the client.

Code	Description
LKJ50	Adjustable Elbow Joint



# TUBING

R A M P R A I L S

Tubing that is swaged on one end, in lengths of 1000, 2000 & 3000mm. A dress ring is also supplied as standard to cover any cut or joining piece. Available in 32mm diameter only.

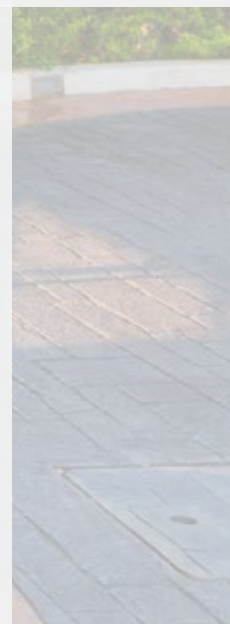
Code	Description
LK026-1000	Tubing 1000mm x 32mm
LK026-2000	Tubing 2000mm x 32mm
LK026-3000	Tubing 3000mm x 32mm

# HOOK ENDS

R A M P R A I L S

Designed to go at the end of a ramp rail, this decorative & practical hook comes in three lengths of 600, 1500 or 2000mm. It is unswaged and fits inside a swaged end of tubing. Available in 32mm diameter only.

Code	Description
LMR43-600	Hook end 600mm x 32mm
LMR43-1500	Hook end 1500mm x 32mm
LMR43-2000	Hook end 2000mm x 32mm

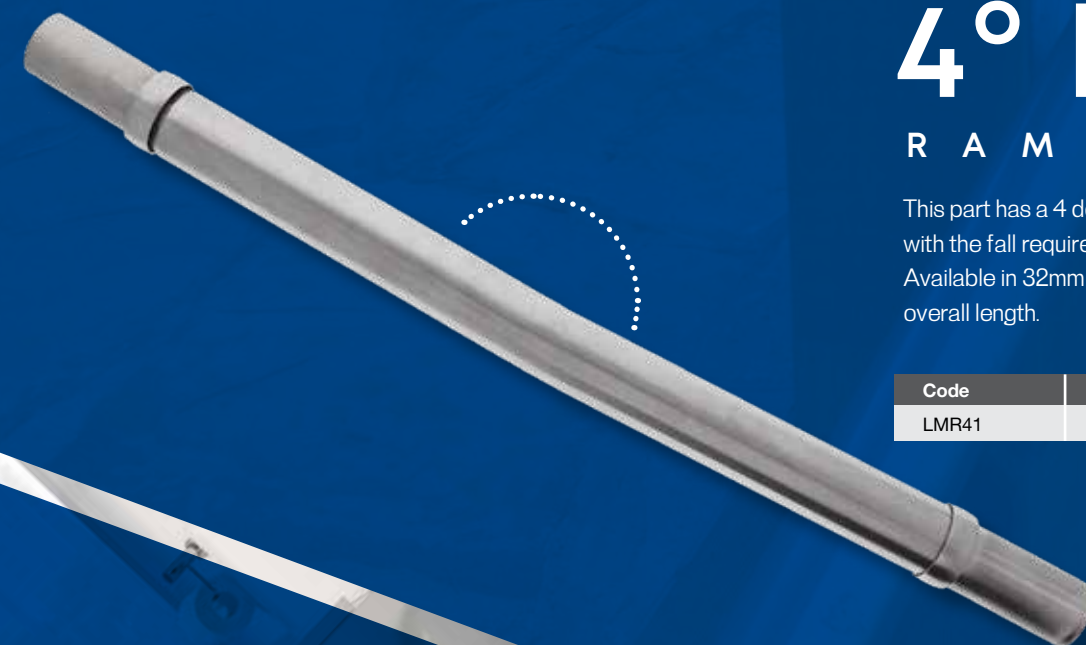


# 4° BEND

R A M P R A I L S

This part has a 4 degree bend making it compliant with the fall required for access & mobility travel. Available in 32mm diameter and it is 600mm in overall length.

Code	Description
LMR41	4 Degree Bend





# One of the market leaders.

As a natural flow on from grab rails, Lencare offers a range of bathroom products that are ideal to use in renovations or new installs.

The products are distinctive by the fact they are often used by home modification installers as their choice of product. They are highly suitable for the aged and disabled market.

Products include a WELS approved selection of hand held showers, accessories such as sliders and water diverters.

Lencare offer a range of shower and commercial hospital tracks, commercial grade shower curtains, folding shower seats, toilet backrests and small staples such as toilet roll holders, soap dishes and non drill pressure rail brackets.

These products when added to the range of grab rails allows the installer to use Lencare as their one stop shop for bathroom refurbishments and fit outs.

Hand Showers

Shower Sliders

Shower Curtains

Shower Seats

Toilet Back Rests

Bathroom Hardware

Shower & Hospital Tracks

# BATHROOM

## SERIES

HAND HELD SHOWER KIT

SPARE PARTS

# HAND SHOWER

C O L L E C T I O N

## Best in the business

Lencare offer a small yet select range of shower products aimed primarily at the bathroom modification market. In an industry that is plagued by hand showers with continual flaws, Lencare sought the advice of bathroom modification experts and installers to create a niche range of hand shower sets. Our aim was that they work, had the necessary requirements that all stakeholders were looking for, were neat in appearance and were attractively priced. We are happy to say we achieved all those aims and have a shower range that is second to none.

Our range is based on two basic models, a pin locating model and an offset oradle design. Both have the same straight hand piece, a 2000mm hose (1500mm additionally for the pin model) and a mid wall bracket. Our showers are Watermark certified and WELS approved. Both styles are supplied with washers, backing plates and fixings.

HAND  
SHOWER  
S



# PIN BRACKET KIT

H A N D S H O W E R



## Chrome Plated

Model Details	
Code	Description
3867-LEN	Hand Shower Pin Bracket + 2.0 Metre Hose
3867A-LH-LEN	Hand Shower Pin Bracket + 1.5 Metre Hose

Accessories For This Model	
Code	Description
HS073-1F01	Hand Piece Straight
DAV01	Hand Piece Curved
F02	Hose 2.0 Metre
F02-15	Hose 1.5 Metre
TR06	No Drill Wall Bracket
A17	Standard Wall Bracket
TR08	Swivel Piece
38WBPSS	Backing Plate
3867W4MM	4mm Washers
TR11	Switchcocks / Water Diverter

The Lencare hand shower for the home modification industry is widely accepted as being one of the market leaders. Recognising the need to address the problems that plagued budget hand showers, Lencare took the advice of industry participants some years ago and made the necessary changes.

Those changes were: to supply a reliable and sturdy swivel assembly, stop the leaking issues, get the no drill and wall brackets to fit securely on the swivel assembly, include a non-return valve into the no drill bracket and provide a high quality hand held water wand.

We're happy to report that all of those issues have been attended to without a hiccup for many years now, thus leaving this model hand shower as arguably the best in the business.



HS073-1F01  
Hand Piece Straight

DAV01  
Hand Piece Curved



F02 / F02-15  
Hose

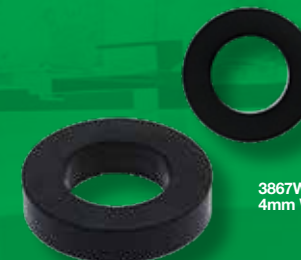
TR06  
No Drill Wall Bracket



A17  
Standard  
Wall Bracket



TR08  
Swivel Piece



3867W4MM  
4mm Washers



38WBPSS  
Backing Plate



TR11  
Switchcocks /  
Water Diverter - Page 92

## The Features:

- ⊕ WELS approved, 3 star rating that uses the standard of 8 litres of water per minute.
- ⊕ Watermark Certified.
- ⊕ Ergonomically designed shower head meets industry standards and individual needs.
- ⊕ The shower head has fine rubber nozzles that can be agitated to release any calcium build up that can occur over time.
- ⊕ This shower head provides a gentle water flow and pattern that is kind on the most fragile skin.
- ⊕ Quality double wound chrome plated flexible hose that holds its shape and resists fatigue.
- ⊕ Supplied with a no fuss swivel that easily fits on to the no drill and wall brackets.
- ⊕ Split design swivel assembly is designed to prevent the shower head from drooping and offers a far superior result compared to other models.
- ⊕ Hose lengths of either 2 metre for a shower recess or 1.5 metre for shower/bath usage.





# CRADLE KIT BRACKET HAND SHOWER



This model hand shower kit is identified by having the hand piece resting inside an adjustable bracket. The 3867-CON model has a conical end fitting for the hand shower end and a hexagon nut for the wall outlet end.

The wall bracket that attaches to the water outlet is a solid design that can be adjusted to accommodate a preferred showering angle. The hand piece can be removed at any time if desired. A recent addition to this model is an inbuilt water non return valve. This will save the installer from adding the unsightly addition of an extra valve externally to the shower unit.

It has a wider base plate of 70mm to cover up any possibility of previous installation imperfections. It also has a longer internal threaded component of 6 threads, which allows for a more secure fitting and dramatically reduces the prospect of behind the scenes water leakage, as some models often demonstrate. The mid wall resting bracket is rounded and ideal for this type of set up. Watermark & WELS approved.

## Chrome Plated

Model Details	
Code	Description
3867-CON	Hand Shower Cradle Bracket + 2.0 Metre Hose
Accessories For This Model	
Code	Description
H03-CON	Rounded Wall Bracket
H24-CON	Squared Wall Bracket
H23-CON	Water Outlet Wall Bracket
3883	Backflow Valve
HS073-1F01	Hand Piece Straight
F02	Hose 2.0 Metre

# Accessories

## CRADLE BRACKET KIT



HS073-1F01  
Hand Piece Straight



3883  
Backflow Valve  
Page 93



F02  
Hose 2.0 Metre

### The Features:

- ⊕ WELS approved, 3 star rating that uses the standard of 8 litres of water per minute.
- ⊕ Comes with a straight hand showering piece that suits all users.
- ⊕ Distributes a medium water pattern spray that is neither too narrow or too wide.
- ⊕ The shower head has fine rubber nozzles that can be agitated to release any calcium build up that can occur over time.
- ⊕ This outlet has a wider flange plate of 70mm that assists in covering up any imperfections that exist behind existing flanges.
- ⊕ The wall bracket is a rounded design which the hose simply slips into. No need to locate holes or pins, making it easier for carers and wheelchair bound clients to rest the unit.
- ⊕ New outlet design (March 2019) has a non return valve inserted into it.
- ⊕ Has a solid water outlet bracket that has an adjustable shower holder built into its body. The shower holder can be easily adjusted to suit any situation.
- ⊕ 2 metre flexible hose as standard. The hose is double wound design with a conical hose end, surpasses regulatory tests and is super reliable. Resists internal cracking, fatigue and failure.
- ⊕ The internal thread of the bracket has six threads and this assists in giving a more secure contact between the external & internal threads when connecting to the wall. It also assists in stopping the water dribbling from the bracket back to the water pipe outlet, thus dramatically reducing the chance of unseen water damage behind the wall.



H03-CON  
Rounded Wall Bracket



H24-CON  
Squared Wall Bracket



H23-CON  
Water Outlet Wall Bracket





# RAIL KIT

H A N D   S H O W E R

Chrome Plated

Model Details

Code	Description
3875	Rail Kit + 1.5 Metre Hose
3876	Rail Kit + 2.0 Metre Hose

Lencare has a range of hand showers that are commonly used throughout the health care industry. This model is a variation on a hand held shower in the fact that the shower is attached to a grab rail with an adjustable slider.

- + WELS approved, 3 star rating that uses the standard of 9 litres of water per minute.
- + Hose lengths of either 1.5 metres or 2 metres.
- + This head provides a gentle water flow and pattern that is kind on the most fragile skin.
- + Adjustable swivel base on shower head allows for individual locating needs.
- + Bronco design shower head with concealed fixing meets industry standards and individual needs
- + Quality double wound chrome plated flexible hose that holds its shape and resists fatigue over many years.
- + Note that these rails are a chrome plated plastic rail, they are not meant to be used in a load bearing situation.

# SHOWER SLIDERS

H A N D   S H O W E R

Shower Slider 32mm Chrome Plate

Lencare have added a new shower slider unit to our stock collection. Made to suit 32mm rails only. It is poly material chrome plated with a nylon internal sliding ring, this enables an easy transverse of the slider along any stainless steel rail. Created for conical shower hoses. It has a multi setting adjustment for the shower holder. This enables the bracket to be finely adjusted, giving the shower user a defined setting point for their individual needs. It has a three position fixing bracket that grips the vertical rail strongly. The middle point setting is the fixed point and either select the top of bottom adjustment position to loosen and reposition the slider. Easy to install and attractively priced.

Code	Description
LSS-32-CP	Shower Slider 32mm Chrome Plated



Shower Slider Pin Design

This model has a locating pin on the slider where the elbow swivel joint from a hand shower is meant to attach. Made of 304 grade stainless steel that will suit 32mm diameter grab rails. Positive action bakelite thumb screw tightens or loosens the unit.

Code	Description
CH1ASH10-PIN	Pin Design - Suits 32mm diameter



Shower Slider Claw Design

Has an adjustable position and a claw shaped resting piece the shower head nestles into. Made of 304 grade stainless steel that will suit 32mm diameter grab rails, this claw design slider is ideally compatible with a conical end shower hose. Positive action bakelite thumb screw tightens or loosens the unit.

Code	Description
CH1ASH10-CLAW	Claw Design - Suits 32mm diameter





STRAIGHT

L SHAPED

U SHAPED

# SHOWER & HOSPITAL TRACKS

C O L L E C T I O N

## Domestic & commercial applications

Lencare supplies a range of curtain tracks that are suitable for domestic or commercial applications. These are the style of curtain tracks that you would find in hospitals, physiotherapy and medical centres. They have a sectioned track that allow twin wheeled track runners to move the curtain. They are fixed to the wall via wall support brackets and most models have a ceiling suspension tube to support the track.

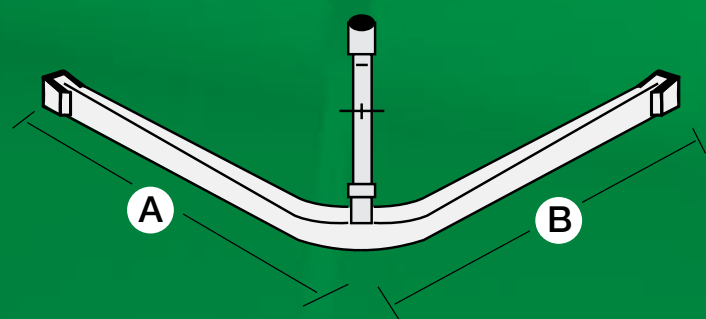
There are two sized sections to choose from. The track most often used for a shower recess is made of a section measuring 25mm high x 20mm wide. The heavy duty model is more for hospitals and medical professional suites and its feature is a bigger section track that is 38mm high x 20mm wide.

Basic shapes include a 90 degree bend, straight lengths and U shaped sections. Variations outside these basic shapes can be considered but due to bending limitations, some shapes cannot be achieved.

Refer to the tables to order from our standard sizes. If you do require a variation in shape, please send us a simple line drawing of your required track. It's necessary that all measurements accompany any drawing submitted.

TRACKS





There are occasions when you will be required to supply handing of a track due to the uneven sizes of a selected shower recess. Refer to this line drawing here. Please supply us both the "A" & "B" measurements based on this line drawing, assuming that the runners are on the underneath side facing downwards of the image.

- ⊕ Can be purchased in forms of straight, bent or U shaped rails.
- ⊕ All U shaped tracks come with a ceiling support for each bend.
- ⊕ Custom made rails can be made for unusual or more complex situations.
- ⊕ Choice of clear anodised aluminium (silver) or a powder coated white finish.
- ⊕ Available in a track height of 25mm (shower) and 38mm (hospital) with a standard width of 20mm.

- ⊕ All accessories are provided, including the track runners, rail end supports, single and double point hangers and ceiling supports of 1000mm (which can be cut to the size required).
- ⊕ All straight tracks under 3000mm do not have a ceiling support. If this is required, it needs to be ordered separately. For right angled hospital tracks of an uneven size, refer to handing image when placing order and identify both "A" and "B" measurements.





# L SHAPED

## S H O W E R & H O S P I T A L T R A C K S

Shower Tracks (mini)  
L Shaped - 25mm x 20mm

Anodised		White	
Code	Length	Code	Length
4114R	900mm x 1800mm	4115R	900mm x 1800mm
4110	1000mm x 1000mm	4111	1000mm x 1000mm
4112	1200mm x 1200mm	4113	1200mm x 1200mm
4161	1500mm x 1500mm	4162	1500mm x 1500mm
4114	1800mm x 900mm	4115	1800mm x 900mm

Hospital Tracks (mono)  
L Shaped - 38mm x 20mm

Anodised	
Code	Length
4124	1000mm x 1000mm
4126	1200mm x 1200mm
4128	1800mm x 900mm
White	
Code	Length
4125	1000mm x 1000mm
4127	1200mm x 1200mm
4129	1800mm x 900mm

# STRAIGHT

## S H O W E R & H O S P I T A L T R A C K S

Shower Tracks (mini)  
Straight - 25mm x 20mm

Anodised		White	
Code	Length	Code	Length
4167	1200mm	4168	1200mm
4173	2000mm	4174	2000mm
4116	2250mm	4117	2250mm
4118	3000mm	4119	3000mm

Shower Tracks (mono)  
Straight - 38mm x 20mm

Anodised		White	
Code	Length	Code	Length
4169	1200mm	4170	1200mm
4130	2250mm	4131	2250mm
4132	3000mm	4133	3000mm

# U SHAPED

## S H O W E R & H O S P I T A L T R A C K S

Shower Tracks (mini)  
U Shaped - 25mm x 20mm

Anodised	
Code	Length
4163	1200mm x 1200mm x 1200mm
White	
Code	Length
4164	1200mm x 1200mm x 1200mm

Shower Tracks (mono)  
U Shaped - 38mm x 20mm

Anodised	
Code	Length
4165	1200mm x 1200mm x 1200mm
White	
Code	Length
4166	1200mm x 1200mm x 1200mm

# Accessories

## S H O W E R & H O S P I T A L T R A C K S

Accessories specially made for our collection of shower and hospital tracks. These products are generally in stock and ready for order.

### Wall Bracket (Shoe)

25mm		
Code	Description	Finish
4121	25mm Wall Bracket (Shoe)	Anodised
4121W	25mm Wall Bracket (Shoe)	White

38mm		
Code	Description	Finish
4134	38mm Wall Bracket (Shoe)	Anodised
4134W	38mm Wall Bracket (Shoe)	White

Anodised finish

White finish

### Point Hangers



4123  
Single point hanger

4123DPH  
Double point hanger

Single Point Hanger		
Code	Description	Finish
4123	Single Point Hanger	Anodised
4123W	Single Point Hanger	White

Double Point Hanger		
Code	Description	Finish
4123DPH	Double Point Hanger	Anodised
413DPHW	Double Point Hanger	White

### Runners

Runners for Tracks		
Code	Description	Finish
4120	Runners in strips of 10	N/A

4120 - Runners

### Ceiling Support



4122W - Ceiling supports  
1000mm white

4122 - Ceiling supports  
1000mm anodised

Ceiling Supports		
Code	Description	Finish
4122	Ceiling Supports - 1000mm	Anodised
4122W	Ceiling Supports - 1000mm	White

STANDARD  
BUDGET  
PREPACKED

# SHOWER CURTAIN

C O L L E C T I O N

## Strength, appearance & durability

Lencare shower curtains are a commercial grade product perfect for usage in a residential environment. Our curtains are made of 100% polyester fabric that are machine washable. They are double weighted and this weighting is stitched into the hem of the curtain. The weighting is encased within a nylon cord to prevent bleed through on to the curtain. The top hem of the curtain has stitched slit holes in it to enable a curtain ring or roller track runners to hold it up. These are spaced approximately 10cm apart. Finally, our shower curtains are compliant to the AWTA specifications for flame retardant performance. They are purpose made for commercial situations if needed.

The curtains are sold in standard drop heights of 1800 or 2000mm and have a variety of widths, from 1200mm up to 3000mm. If a custom made size is required, we are able to make these upon production of a detailed drawing to our sales office. When measuring the drop or the width of any curtain, the size is determined from hem to hem. Please note that when ordering curtain widths, allow an additional 10-15% for gathering and to avoid a straight appearance. Our curtains are available in a white box striped pattern only.

CURTAINS



# STANDARD

## POLYESTER

### SHOWER CURTAINS

The distinguishing feature of Lencare shower curtains is their endurance in either commercial or residential installations. They present a far more viable prospect than inferior retail curtains and are noted throughout the industry for their strength, appearance and durability. Being a double weighted curtain only adds to their market value and as such, they meet requirements needed for all applications.

There are two standard drop sizes stocked, those being 1800 or 2000mm. Sizes outside the standard can be ordered. Such orders require an accompanying diagram depicting the measurements or any variation on the shape. Our curtains have a stitched double weighting to them, are machine washable and only sold in a white box stripe pattern.

#### 1800mm Drop

White	
Code	Size (Drop x Width)
4171	1800mm (drop) x 1000mm (wide)
4100	1800mm (drop) x 1300mm (wide)
4101	1800mm (drop) x 1800mm (wide)
4102	1800mm (drop) x 2000mm (wide)
4103	1800mm (drop) x 2400mm (wide)
4104	1800mm (drop) x 2600mm (wide)
4175	1800mm (drop) x 3000mm (wide)

#### 2000mm Drop

White	
Code	Size (Drop x Width)
4172	2000mm (drop) x 1000mm (wide)
4105	2000mm (drop) x 1300mm (wide)
4106	2000mm (drop) x 1800mm (wide)
4107	2000mm (drop) x 2000mm (wide)
4108	2000mm (drop) x 2400mm (wide)
4109	2000mm (drop) x 2600mm (wide)
4176	2000mm (drop) x 3000mm (wide)

- + Made of 100% polyester. The box stripe pattern is made of a commercial grade polyester fabric and is mould resistant.
- + Double weighted shower curtains especially designed for health care usage.
- + Neatly machine stitched and show no signs of heat searing marks that plague other brands.
- + The weighting is neatly contained within a sleeve which is then stitched into the hem of the curtain, making for a neat finish that will prevent bleed through.
- + Available in 1800mm and 2000mm drop. Curtain sizes outside the parameters can be requested.
- + Single or non weighted curtains are available upon request.
- + Easily washable with washing machine.
- + All shower curtains are neatly packaged in a poly bag.
- + Shower hooks/rings/runners are not supplied with these curtains.
- + Conforms to AWTA flame retardant testing.

# BUDGET

## TAFFETA

### SHOWER CURTAINS

Lencare offers a budget range of shower curtains for customers not requiring the features of the commercial range. These are ideal for services that need to supply a cheap alternative to our commercial range, where basic functionality and not features are of importance. Made of taffeta with eyelets sewn in, thus offering a smooth silky textured curtain. It comes with 12 curtain rings and a weighted hem. Machine washable.

1800mm Drop - White	
Code	Size (Drop x Width)
T600WH	1800mm (drop) x 1800mm (wide)

1800mm Drop - Cream	
Code	Size (Drop x Width)
T600VN	1800mm (drop) x 1800mm (wide)

2130mm Drop - White	
Code	Size (Drop x Width)
T600WH-213	2130mm (drop) x 1800mm (wide)

2130mm Drop - Cream	
Code	Size (Drop x Width)
T600VN-213	2130mm (drop) x 1800mm (wide)

# PREPACKED

## POLYESTER

### SHOWER CURTAINS

This is a commercial shower curtain prepacked and limited to one size 1800mm wide x 2130mm drop. It has a 20 gram weighting and available in the box stripe design.

2130mm Drop - White	
Code	Size (Drop x Width)
D137-213WH	2130mm (drop) x 1800mm (wide)

2130mm Drop - Cream	
Code	Size (Drop x Width)
D137-213CM	2130mm (drop) x 1800mm (wide)

# Accessories

## SHOWER CURTAIN

Shower curtain rings, sold in a pack of 10. Suitable for budget shower curtains, standard shower curtains and prepacked shower curtains.

Clear Rings Pack of 12		
Code	Description	Finish
4135	Shower Curtain Rings	Clear



# SHOWER SEATS

B A T H R O O M S E R I E S



The Lencare shower seat range is available in three sizes. They are designed to be easy to fold up and push down to open. Made with the frail, elderly and disabled in mind, the seat folds up against the wall when not in use and is easily accessed when required. The legs are spring loaded to facilitate that function. The function to raise or lower the seat is an easy, soft operation. The legs are made of 304 grade stainless steel. The seat component is made of acrylic and has in built slots to drain off the water.

Code	Size	Finish
FSS450	450mm(w) x 400mm(d)	White
FSS600	600mm(w) x 400mm(d)	White
FSS960	960mm(w) x 400mm(d)	White

**For the  
frail, elderly &  
disabled**



- ⊕ Made of 304 stainless steel with concealed fixed mounting.
- ⊕ Tightening is secured by grub screw fixing beneath the mounting bracket.
- ⊕ The wall mounts fit inside the tube of the backrest and are made with some additional length in them in case an extended standoff is required.
- ⊕ The backrest stands off 376mm from the wall to the back of the padded rest.
- ⊕ Pad measures 350mm wide x 152mm high.
- ⊕ Wall fixing bracket measures 156mm high x 40mm wide.
- ⊕ Width of the unit centre to centre is 560mm.

# Fully compliant Australian Standards

## Straight Rail with Padded Rest

This product comes with a white padded PVC backrest.

Code	Description	Seat Type
MLR119	Straight 119	Padded White

## Curved Rail with Padded Rest

The curved rail suits some bigger cistern pans.

Code	Description	Seat Type
MLR119C	Curved 119C	Padded White

- ⊕ Tightening is secured by grub screw fixing beneath the mounting bracket.
- ⊕ The wall mounts fit inside the tube of the backrest and are made with some additional length in them in case an extended standoff is required.



## Vandal Proof with Curved Back Rest

This product comes with a 304 grade stainless steel backrest. This seat distinguishes the model as vandal proof. The curved rail also suits some bigger cistern pans.

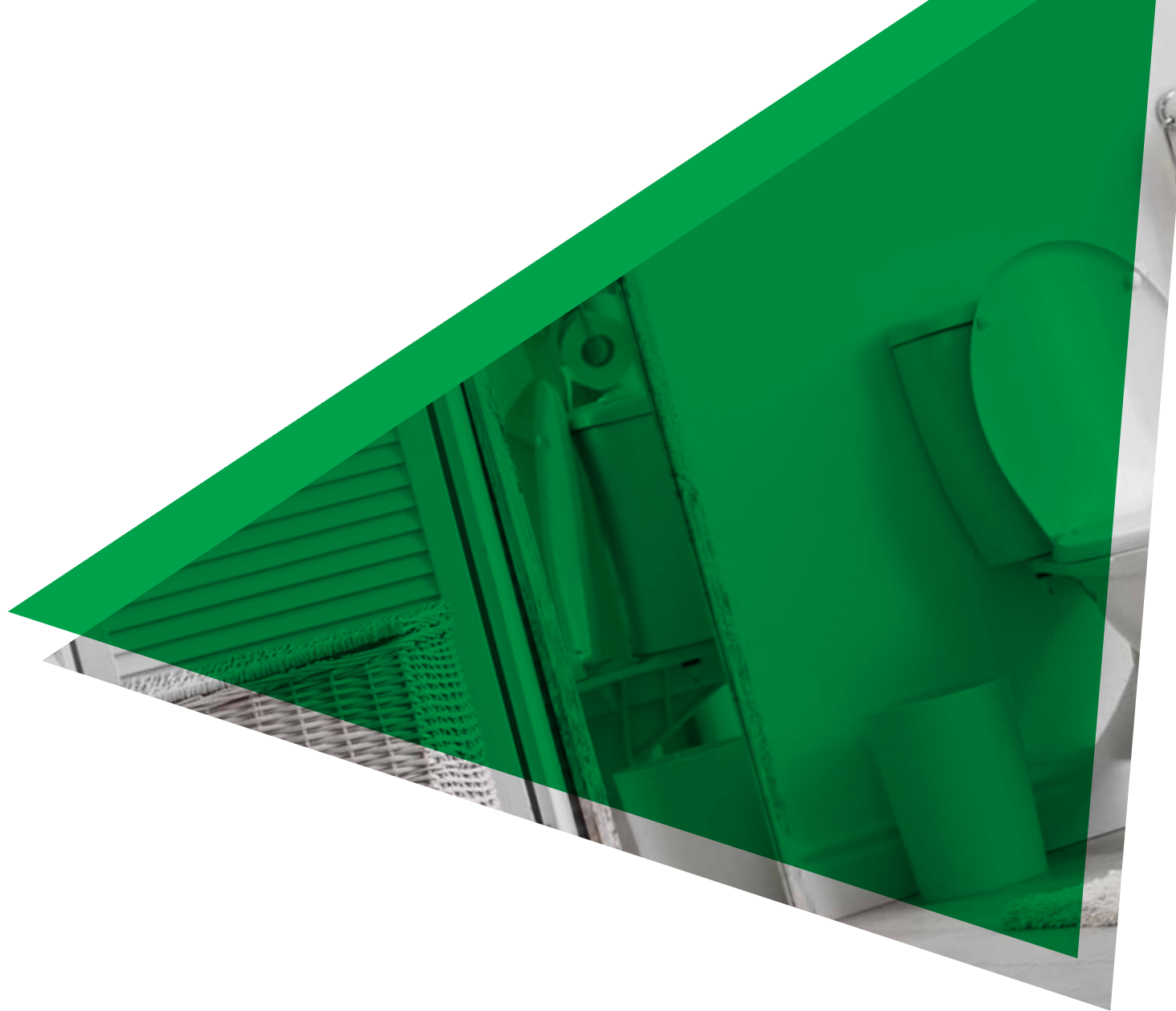
Code	Description	Seat Type
MLR119VP	Vandal Proof 119CVP	Stainless Steel

# TOILET BACKREST

## BATHROOM SERIES

Lencare sells a selected range of toilet backrests. This range is fully compliant with Australian Standards AS1428.1. Each of the three models offers a slight variation in function.





# Home modification refurbishments

SOAP DISH

CAPTIVE TOILET ROLL HOLDER

EASY RAIL FITTINGS

SWITCHCOCKS

# HARDWARE

B A T H R O O M S E R I E S

Lencare offers a selected range of bathroom hardware that provides finishing touches to a newly renovated or reworked bathroom. There is a selection of items to choose from and although not aimed at the boutique end of the market, they are ideal as replacements, especially for home modification refurbishments.



HARDWARE



# EASYRAIL FITTINGS

B A T H R O O M  
H A R D W A R E



Code	Description
1075	Easy Rail Fittings

This product is designed to work with 16mm and 19mm tubing and is unique because of the fixing system it provides.

No need to drill into the wall. The rod ends have a self adhesive backing to assist in securing the unit. The unit works on adjustment pressure to remain in place.

The adjustment screw is inserted into the threaded collar with the tube fitting over that screw and into the collar. The collar is then adjusted either clockwise or anticlockwise to fit into the defined space. Once completed it creates a tight fit.

# SWITCHCOCKS

W A T E R  
D I V E R T E R

B A T H R O O M H A R D W A R E

This product is a switchcock or diverter device made of brass and finished in chrome plate. Has a bakelite operating switch and offers a smooth, easy to use action. Ideally used on hand showers within the home modification industry.

Commonly used to divert the water source from a fixed shower to a hand held shower and vice versa.



Code	Description
TR11	Switchcocks / Water Diverter

# Backflow Valve

B A T H R O O M  
H A R D W A R E



This product is known as a backflow or non-return valve. It has a valve inside the nut shaped assembly and the valve is designed to prevent water backflow.

Code	Description
3883	Backflow Valve

# SOAP DISH

B A T H R O O M  
H A R D W A R E

- + This soap dish has a solid base and one drainage hole in the middle of the dish.
- + Concealed fixing.
- + Zinc diecast construction.
- + Chrome plated finish.



Code	Finish
1134	Chrome Plated

# TOILET ROLL HOLDER

B A T H R O O M  
H A R D W A R E



- + Economical captive toilet roll holder.
- + 4 hole fixing.
- + Aluminium construction.
- + Available in poly bag, complete with screws.

Code	Description
1117	Toilet Roll Holder with Screws



For  
safety &  
stability

Lencare offer a selection of threshold ramps which aid in getting wheelchairs or walkers over doorway thresholds. We offer the choice of aluminium or rubber construction. All ramps meet the access and mobility gradient requirements of 1:8.

We have two models in the aluminium ramps – single or double sided ramps. There are two heights in the single sided ramps of 12mm and 19mm. The double sided ramps are in 6mm or 11mm. Both can be cut to size on site and are available in various doorway widths.

The rubber ramps are in two heights of 25mm and 50mm. These have the capacity to be trimmed to size if a different height is required. They have built-in side wings which reduce the additional cost of supplying extra side wings on door installations.

# THRESHOLD RAMPS SERIES



# RUBBER

## THRESHOLD RAMPS

Code	Size	Finish
TR025	25mm x 200mm x 1010mm	Black
TR050	50mm x 400mm x 1140mm	Black



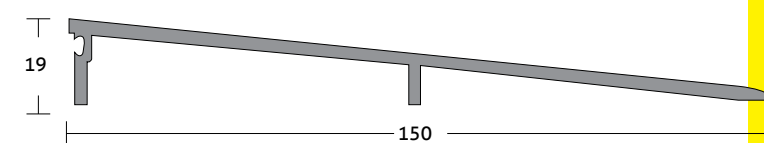
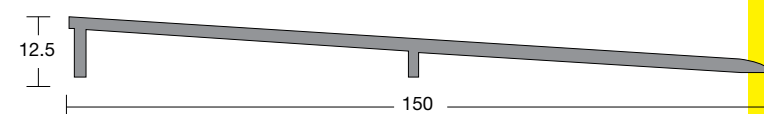
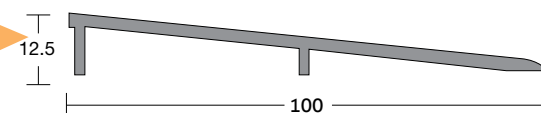
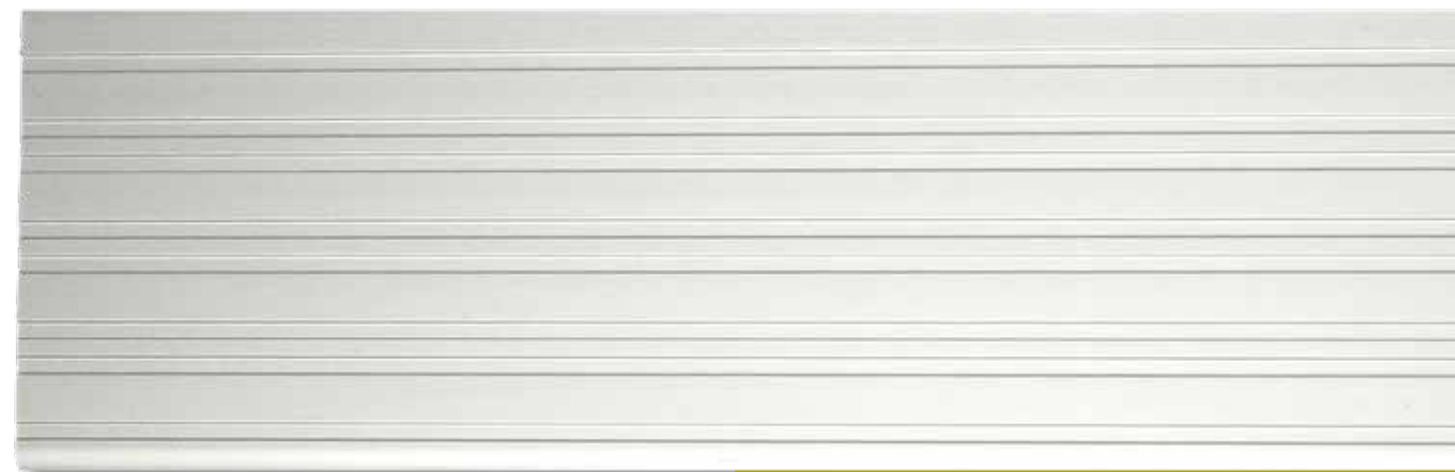
The Raven range of rubber threshold ramps are ideal for access to rooms for wheelchairs, walking frames, trolleys and any other situation where a tripping hazard may potentially exist. These items are designed to provide easy transverse between or into rooms, whether in the home or working environment.

Made from slip resistant recycled rubber, they offer a permanent or temporary solution, as they can be fixed or not. They are ideal for the aged and disabled, as they provide the required front gradient and have built-in side wings for safety and stability. There are two sizes available. They are extremely durable, and require no maintenance.

- + Quick & easy installation.
- + Cost effective alternative to other materials.
- + Can be used as a portable item or alternatively fixed into place either by fastening or by builders' adhesive.
- + Available in two sizes of 25mm & 50mm. If in between sizes are required, the ramps can be cut down by using a jig saw. On the underneath of the ramp, there are 5mm incremented cutting guides if trimming is required.
- + Both models have built-in side wings either side of the ramp and apart from being practical, it reduces the cost of purchasing additional side wings.
- + The 25mm size, although priced as one, is sold in packs of two, so the minimum order on this item is two. The 50mm is packaged as one and sold accordingly as one.

# ALUMINIUM

## THRESHOLD RAMPS



Lencare has a selection of extruded anodised threshold ramps to aid wheelchairs in getting over doorways where a variation in floor height exists. Their low profile ensures compliance for people with disabilities where wheelchair traffic is needed.

12.5mm Model		
Code	Size	Finish
MCS-12AW1	12.5mm x 100mm x 1000mm	Aluminium
MCS-12AW13	12.5mm x 100mm x 1300mm	Aluminium
MCS-12AW2	12.5mm x 100mm x 2000mm	Aluminium
4185	12.5mm x 150mm x 1000mm	Aluminium
4186	12.5mm x 150mm x 1250mm	Aluminium
4187	12.5mm x 150mm x 2000mm	Aluminium

19mm Model		
Code	Size	Finish
MCS-19AW1	19mm x 150mm x 1000mm	Aluminium
MCS-19AW13	19mm x 150mm x 1300mm	Aluminium
MCS-19AW2	19mm x 150mm x 2000mm	Aluminium

- + Single sided aluminium ramp.
- + Gradient of ramp meets Australian Standards AS1428.1.
- + Two heights to choose from - 12.5mm and 19mm.
- + Made of a ribbed aluminium construction, offering easy adjustment of length if required.
- + Widths of 100mm and 150mm to select from.
- + Can be purchased in all sizes in lengths of 1000mm, 1300mm or 2000mm.

# ALUMINIUM

## THRESHOLD

### RAMPS

#### DOUBLE SIDED



#### 6mm Model

Code	Size	Finish
IS4010-1000	6mm x 75mm x 1000mm	Aluminium
IS4010-1500	6mm x 75mm x 1500mm	Aluminium
IS4010-2000	6mm x 75mm x 2000mm	Aluminium
IS4015-1000	6mm x 100mm x 1000mm	Aluminium
IS4015-1500	6mm x 100mm x 1500mm	Aluminium
IS4015-2000	6mm x 100mm x 2000mm	Aluminium
IS4020-1000	6mm x 125mm x 1000mm	Aluminium
IS4020-1500	6mm x 125mm x 1500mm	Aluminium
IS4020-2000	6mm x 125mm x 2000mm	Aluminium
IS4025-1000	6mm x 150mm x 1000mm	Aluminium
IS4025-1500	6mm x 150mm x 1500mm	Aluminium
IS4025-2000	6mm x 150mm x 2000mm	Aluminium

#### 11mm Model

Code	Size	Finish
IS4030-1000	11mm x 75mm x 1000mm	Aluminium
IS4030-1500	11mm x 75mm x 1500mm	Aluminium
IS4030-2000	11mm x 75mm x 2000mm	Aluminium
IS4035-1000	11mm x 100mm x 1000mm	Aluminium
IS4035-1500	11mm x 100mm x 1500mm	Aluminium
IS4035-2000	11mm x 100mm x 2000mm	Aluminium
IS4040-1000	11mm x 125mm x 1000mm	Aluminium
IS4040-1500	11mm x 125mm x 1500mm	Aluminium
IS4040-2000	11mm x 125mm x 2000mm	Aluminium
IS4045-1000	11mm x 150mm x 1000mm	Aluminium
IS4045-1500	11mm x 150mm x 1500mm	Aluminium
IS4045-2000	11mm x 150mm x 2000mm	Aluminium

- + Double sided ramp.
- + Gradient of ramp meets Australian Standards AS1428.1 and conforms to BCA D3 relating to access for people with disabilities.
- + Supplied with PVC bedding pads to eliminate noise and vibration.
- + Can be fixed by screws or building adhesive for concealed fixing.
- + Made of a ribbed aluminium construction.
- + Easy trimming of length if required.
- + 6mm or 11mm low profile design suitable for wheelchair traffic.
- + Widths of 75mm, 100mm, 125mm and 150mm.
- + Can be purchased in lengths of 1000mm, 1500mm and 2000mm
- + Due to the length of these rails and courier constraints, sizes of 3000mm and over will carry additional freight charges. Please ensure you ask about these when requesting a quote or placing your order.

# the range that is ever evolving

commitment to supply  
reliable, exceptional quality and  
fairly priced products is our **priority**.

[www.lencare.com.au](http://www.lencare.com.au)







# SAFETY

S E R I E S

Wall Mounted

Portable

This product is ideal to hide a key and can be accessed by using the right combination. It has a four digit resettable code. Its uses are varied and can be useful in providing entry access to carers who are needed to assist the aged or disabled. There are two models, the most popular as a box that can be screw fixed to a surface. Alternatively, there is a portable model with a padlock shackle that is useful in more mobile situations.

Usage  
beyond  
imagination





# WALL MOUNTED

K E Y   S A F E

Lencare Key Safe is a box that is accessed by using a changeable four digit code. Once the code is entered, the cover is then removed, exposing a space where a key or any other product can be hidden from general view. It's ideal for access to houses, offices and holiday dwellings. Usage is only limited by your imagination.

- + Concealed fixing. The securing is done via the back of the casing.
- + A code changing tool/screwdriver is supplied with the product.
- + Easy to change code combination. A changeable four digit code that once entered, allows the user to remove the lid and access a key hidden inside the box.
- + Sold individually or in boxes of 6.

Wall Mounted	
Code	Finish
001004	White / Clay

# PORTABLE

K E Y   S A F E



Lencare Portable Key Safe is a box that is accessed by using a changeable four digit code for keyless access convenience. The compact design allows you to move it whenever necessary and its moulded construction allows you to hang it over a door knob, rail, pipe and more.

- + Featuring a shackle that can attach to many different scenarios, such as on a rail, around a pipe or garden tap and over a door knob.
- + A code changing tool/screwdriver is supplied with the product.
- + Easy to change code combination. A changeable four digit code that once entered, allows the user to remove the lid and access a key hidden inside the box.
- + Sold individually or in boxes of 6.

Portable	
Code	Finish
SU1192	Black / Grey





Our superior products such as concealed grab rail, exposed grab rail, single hole grab rail and drop down grab rail are tested for quality by the Melbourne Testing Services (MTS) to ensure our products are at the highest quality.

You can download and read the full test report on our website: <https://lencare.com.au/certifications>



Melbourne Testing Services Pty Ltd  
ABN: 11 088 395 153  
**Delivery Address:**  
1/15 Pickering Road  
Mulgrave Vic 3170  
**Postal Address:**  
PO Box 5111  
Brandon Park Vic 3150  
**Telephone:** 61 3 9560 2759  
**Facsimile:** 61 3 9560 2769  
**Email Address:** info@melbtest.com.au  
**Web Address:** www.melbtest.com.au

## TEST CERTIFICATE

For full test details refer to MTS Test Report MT-12/248-B

**CLIENT:** LENCARE  
ATT:  
B1 2-6 GREENHILLS AVE  
MOOREBANK NSW 2170  
**TEST DATE:** MAY 23<sup>RD</sup> 2012

**STANDARD REFERENCE:** AS1428.1-2009  
Design for Access and Mobility  
Part 1: General Requirements for Access-New Building Work  
Clause 17 (c), load was to be applied at a constant rate until the nominated proof load of **1100 Newtons** was achieved.

**PRODUCT IDENTIFICATION:**  
**Product Code:** 1527P  
**Description:** Grab Rail 32x1200 Conc Poly Pol SS  
**Tube Diameter:** 32mm (nom.)  
**Tube Material:** Stainless Steel  
**Grabrail Length:** 1200mm (Centre to Centre)  
**Elbow/Flange connection:** 5 fastener holes

**TEST PROCEDURE:**  
The grabrail was assembled and fixed to a length of timber beam (90mm x 45mm Grade MGP10 Pine) which was in turn secured to the base plate of a testing machine. In order to simulate the grabbing action of a human hand, a fabric lifting sling was wrapped around the grabrail tubing. The end of the sling was then coupled to the testing machine's loading device. Load testing was conducted at the mid-span position and at one end of the grabrail test item. At both loading points, load was applied in the horizontal outward direction (tension action of screw fasteners) and in the vertical downward direction (shearing action of screw fasteners). Once the nominated proof load was applied the load was maintained for 60 seconds and the grabrail was examined for signs of distress including excessive bending and fastener withdrawal. Once the 60s proof test period had elapsed, load testing was continued until the peak force was achieved and failure of the grabrail or connection occurred.

**LOAD TEST OBSERVATIONS:**  
*End flange vertical load test* The grabrail supported the proof load test without failure or excessive deformation. Upon reloading the grabrail, a peak load of **1742N** was achieved.  
*Mid-span vertical load test* The grabrail supported the proof load test without failure or excessive deformation. Upon reloading the grabrail, a peak load of **1805N** was achieved.  
*End flange horizontal outward load test* The grabrail supported the proof load test without failure or excessive deformation. Upon reloading the grabrail, a peak load of **4645N** was achieved.  
*Mid-span Horizontal outward load test* The grabrail supported the proof load test without failure or excessive deformation. Upon reloading the grabrail a peak load of **3093N** was achieved.

**TEST COMMENTS:**  
In accordance with AS 1428.1 Clause 17 (c), the test item as reported as passed the specified proof load testing requirements of **1100 Newtons**. The factor of safety based on the lowest recorded test load of 1742N is computed to be 1.58.





Melbourne Testing Services Pty Ltd  
ABN: 11 088 395 153  
**Delivery Address:**  
1/15 Pickering Road  
Mulgrave Vic 3170  
**Postal Address:**  
PO Box 5111  
Brandon Park Vic 3150  
**Telephone:** 61 3 9560 2759  
**Facsimile:** 61 3 9560 2769  
**Email Address:** info@melbtest.com.au  
**Web Address:** www.melbtest.com.au

# TEST CERTIFICATE

For full test details refer to MTS Test Report MT-12/248-A

**CLIENT:** LENCARE  
ATT:  
B1 2-6 GREENHILLS AVE  
MOOREBANK NSW 2170  
**TEST DATE:** MAY 23<sup>RD</sup> 2012  
**STANDARD REFERENCE:** AS1428.1-2009  
Design for Access and Mobility  
Part 1: General Requirements for Access-New Building Work  
Clause 17 (c), load was to be applied at a constant rate until the nominated proof load of **1100 Newtons** was achieved.  
**PRODUCT IDENTIFICATION:**  
Product Code: 3109  
Description: Grab Rail Single Hole 32mm 600mm BRSH SS  
Tube Diameter: 32mm (nom.)  
Tube Material: Stainless Steel  
Grabrail Length: 600mm (Centre to Centre)  
Elbow/Flange connection: Single Hole

**TEST PROCEDURE:**  
The grabrails were assembled and fixed to a length of timber beam (90mm x 45mm Grade MGP10 Pine) which was in turn secured to the base plate of a testing machine. In order to simulate the grabbing action of a human hand, a fabric lifting sling was wrapped around the grabrail tubing. The end of the sling was then coupled to the testing machine’s loading device. Load testing was conducted at the mid-span position and at one end of the grabrail test item. At both loading points, load was applied in the horizontal outward direction (tension action of screw fasteners) and in the vertical downward direction (shearing action of screw fasteners). Once the nominated proof load was applied the load was maintained for 60 seconds and the grabrail was examined for signs of distress including excessive bending and fastener withdrawal. Once the 60s proof test period had elapsed, load testing was continued until the peak force was achieved and failure of the grabrail or connection occurred.  
**LOAD TEST OBSERVATIONS:**  
*End flange vertical load test* The grabrail supported the proof load test without failure or excessive deformation. Upon reloading the grabrail, a peak load of **4570N** was achieved.  
*Mid-span vertical load test* The grabrail supported the proof load test without failure or excessive deformation. Upon reloading the grabrail, a peak load of **3004N** was achieved.  
*End flange horizontal outward load test* The grabrail supported the proof load test without failure or excessive deformation. Upon reloading the grabrail, a peak load of **7478N** was achieved.  
*Mid-span Horizontal outward load test* The grabrail supported the proof load test without failure or excessive deformation. Upon reloading the grabrail a peak load of **3647N** was achieved.  
**TEST COMMENTS:**  
In accordance with AS 1428.1 Clause 17 (c), the test item as reported as passed the specified proof load testing requirements of **1100 Newtons**. The factor of safety computed on the lowest recorded test load of 3004N is computed to be 2.73.



Melbourne Testing Services Pty Ltd  
ABN: 11 088 395 153  
**Delivery Address:**  
1/15 Pickering Road  
Mulgrave Vic 3170  
**Postal Address:**  
PO Box 5111  
Brandon Park Vic 3150  
**Telephone:** 61 3 9560 2759  
**Facsimile:** 61 3 9560 2769  
**Email Address:** info@melbtest.com.au  
**Web Address:** www.melbtest.com.au

# TEST CERTIFICATE

For full test details refer to MTS Test Report MT-12/248-C

**CLIENT:** LENCARE  
ATT:  
B1 2-6 GREENHILLS AVE  
MOOREBANK NSW 2170  
**TEST DATE:** JUNE 8<sup>TH</sup> 2012  
**STANDARD REFERENCE:** AS1428.1-2009  
Design for Access and Mobility  
Part 1: General Requirements for Access-New Building Work  
Clause 17 (c), load was to be applied at a constant rate until the nominated proof load of **1100 Newtons** was achieved.  
**PRODUCT IDENTIFICATION:**  
Product Code: LK030  
Description: Drop Down GR RL TRH  
35x775x195mm BSS  
Tube Diameter: 35mm (nom.)  
Tube Material: Stainless Steel  
Grabrail Length: 775mm (Overall)  
Hinge/Plate connection: 8 fastener holes

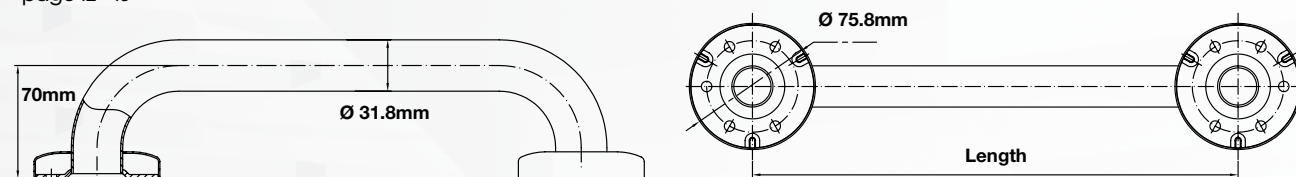
**TEST PROCEDURE:**  
The grabrail was assembled and fixed to a vertical timber stud member (90mm x 45mm Grade MGP10 Pine), which was in turn secured to the base plate of a testing machine (see Fig.2). Load was applied 0.5m out from the grabrail’s hinge mechanism. The loading direction was vertically downward and was applied as a concentrated force, acting directly against the SS tube. Due to the drop down grabrail’s primary purpose of supporting downward force, no attempt was made to test the grabrail for lateral loading whereby the device was deemed to have insufficient strength to support lateral loads equivalent to the downward action effect. Once the nominated proof load was applied the load was maintained for 60 seconds and the grabrail was examined for signs of distress including excessive bending and fastener withdrawal. Once the 60s proof test period had elapsed, load testing was continued until the peak force was achieved and failure of the grabrail or connection occurred.  
**LOAD TEST OBSERVATIONS:**  
The grabrail supported the proof test load of 1100N without failure and there was no sign of excessive bending, plastic deformation or withdrawal of the screw fasteners. Upon ultimate load testing a peak force of **3385N** was recorded before the upper most screw fastener withdrew from the timber. Post test examination of the fold down grabrail revealed localised indentation of the tube had occurred at the point of application of load. There was no other damage to the grabrail or hinge plate connection itself.  
**TEST COMMENTS:**  
In accordance with AS 1428.1 Clause 17 (c), the test item as reported herein has passed the specified proof load testing requirements of 1100 Newtons.  
The factor of safety based on the ultimate test load of 3385N is computed to be 3.08.



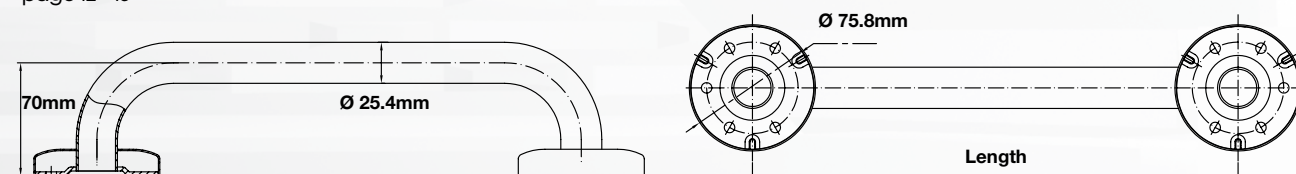
# Measurement GUIDES

## G R A B R A I L

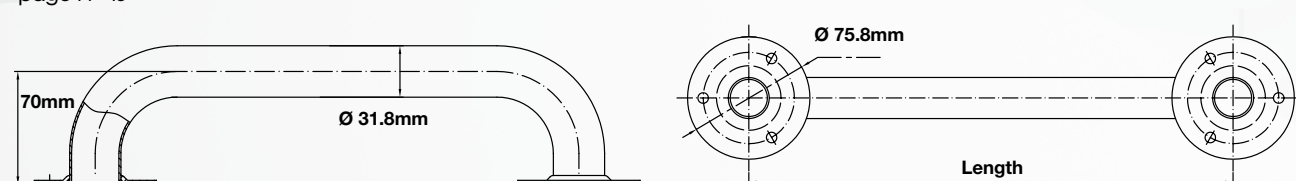
**32mm Concealed Fix Grab Rail**  
page 12 - 13



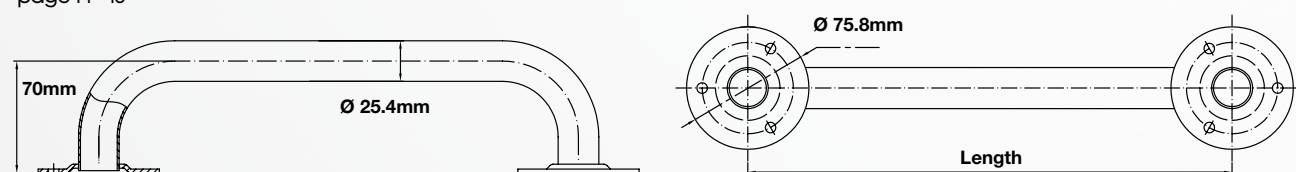
**25mm Concealed Fix Grab Rail**  
page 12 - 13



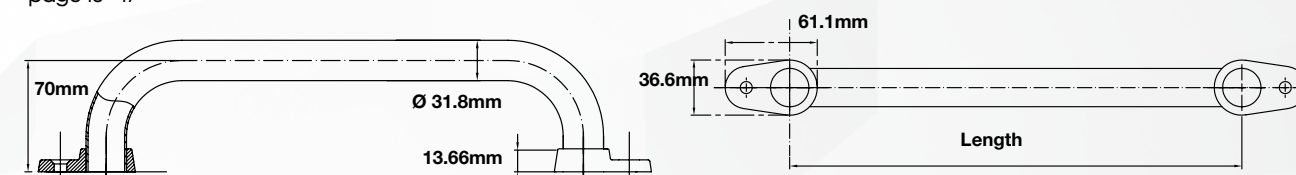
**32mm Exposed Fix Grab Rail**  
page 14 - 15



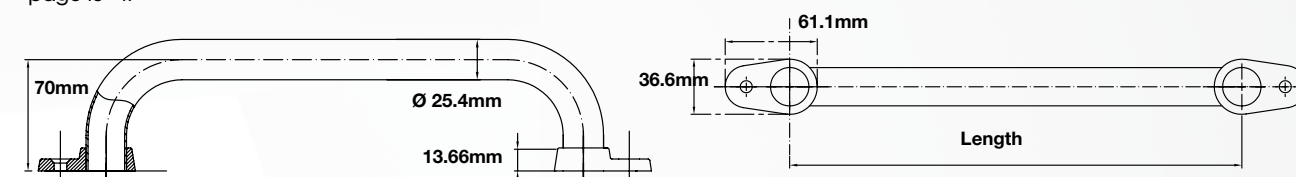
**25mm Exposed Fix Grab Rail**  
page 14 - 15



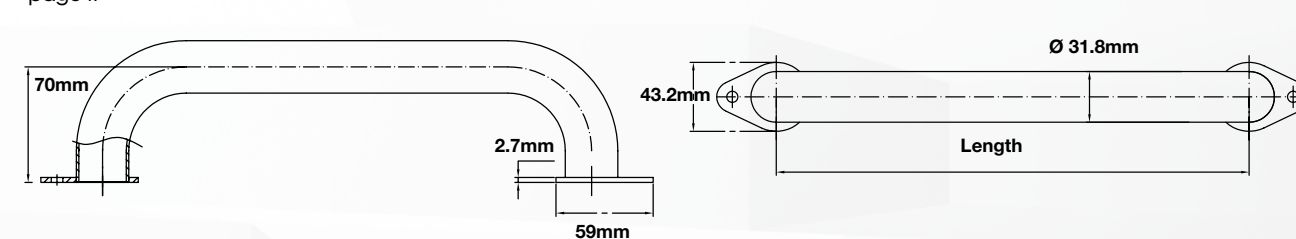
**32mm Single Hole Fix Grab Rail**  
page 16 - 17



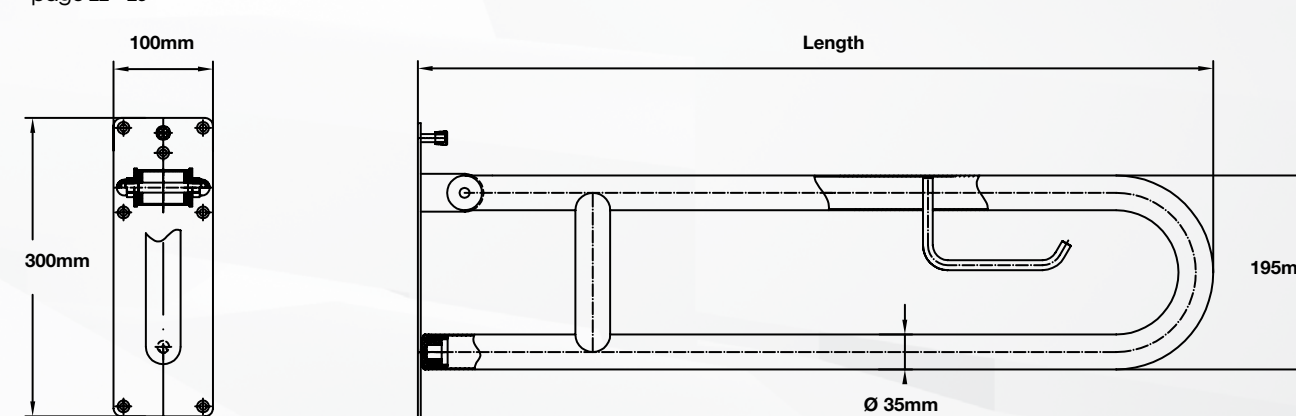
**25mm Single Hole Fix Grab Rail**  
page 16 - 17



**32mm Flat Flange Single Hole**  
page 17



**Drop Down Grab Rail**  
page 22 - 23





# Products Index



<b>RAIL SERIES</b>	<b>08</b>		
<b>GRAB RAIL</b>	<b>10</b>	<b>SPECIAL APPLICATION</b>	<b>42</b>
Concealed Fix Grab Rail	12	<b>In Stock Ready To Order</b>	<b>44</b>
Exposed Fix Grab Rail	14	Horizontal Shower Rail	44
Single Hole Fix Grab Rail	16	Standard	44
Standard	16	Reverse	44
Flat Flange	17	L Shaped Floor Mounted	44
Offset Grab Rail	18	Ambulant Right Angled	45
Combination Grab Rail	19	U Shaped Floor Mounted	45
<b>Sliding Grab Rail</b>	<b>20</b>	<b>Made To Order</b>	<b>46</b>
New Sliding	20	For Steps	47
Original Sliding	21	For Toilets	48
Accessories	21	For Bathtubs	52
Bracket New with Grub Screw Fix	21	For Showers	54
<b>Drop Down Grab Rail</b>	<b>22</b>		
Standard No Toilet Holder	23	<b>EXTERNAL RAMP RAIL</b>	<b>58</b>
With Toilet Holder	23	<b>Brackets</b>	<b>60</b>
<b>Shower Recess Grab Rail</b>	<b>24</b>	Ramp Corner Brackets	60
Standard	24	External	60
Concealed Flange Shower Recess	25	Internal	60
		Undersling Support Bracket	60
<b>MODULAR</b>	<b>26</b>	Top Fixing 90 Degree Elbow	61
<b>Tubes</b>	<b>28</b>	Top Fix Bracket	61
<b>Elbows</b>	<b>30</b>	<b>Return Set</b>	<b>62</b>
Elbow Ends	30	Standard	62
Standard Elbow Ends	30	Half Set	62
Corner Elbow Ends Concealed	31	Extended Half Set	63
Corner Elbow Ends Exposed	31	<b>Knuckle Joints</b>	<b>64</b>
Corner Elbow Ends Single Hole	31	<b>Tubing</b>	<b>65</b>
Elbow 40 Degree	32	<b>Hook Ends</b>	<b>65</b>
Left Hand	32	<b>4 Degree Bend Tube</b>	<b>65</b>
Right Hand	32		
Elbow 90 Degree	32		
Corner	31	<b>BATHROOM SERIES</b>	<b>66</b>
Vertical Centred LH	32	<b>HAND SHOWERS</b>	<b>68</b>
Vertical Centred RH	32	<b>Pin Bracket Hand Shower</b>	<b>70</b>
Horizontal LH	33	Kit	70
Horizontal RH	33	Accessories	71
Vertical LH	33	Straight Hand Piece	71
Vertical RH	33	Curved Hand Piece	71
<b>Bends</b>	<b>34</b>	Hose	71
Bend 30 Degree	35	Wall Brackets	71
Bend 40 Degree	35	Standard	71
Bend 90 Degree	35	No Drill Wall Bracket	71
<b>Straight Ends</b>	<b>36</b>	Swivel Piece	71
Standard	37	Backing Plate	71
Long	37	4mm Washers	71
Elongated Flange	37	Switchcock - Water Diverter	92
<b>Straight Joiners</b>	<b>38</b>	<b>Cradle Bracket Hand Shower</b>	<b>72</b>
Standard	38	Kit	72
Less Undersling	38	Accessories	73
<b>Tee Section</b>	<b>39</b>	Straight Hand Piece	73
<b>Hand Rail Support</b>	<b>39</b>	Hose	73
<b>Towel Grab Rail</b>	<b>40</b>	Wall Brackets	73
Ends Per Pair	41	Rounded	73
Combination Elbow End	41	Squared	73
Tube 19mm Diameter	41	Water Outlet	73
<b>Accessories</b>	<b>41</b>	Backflow Valve	93
Round Flange Cover	41	<b>Hand Shower with Rail Kit</b>	<b>74</b>
Square Flange Cover	41		
		<b>SHOWER SLIDERS</b>	<b>75</b>
		32mm Chrome Plate	75
		Pin Design	75
		Claw Design	75
		<b>SHOWER &amp; HOSPITAL TRACKS</b>	<b>76</b>
		<b>L Shaped</b>	<b>80</b>
		Shower Tracks (Mini)	80
		Hospital Tracks (Mono)	80
		<b>Straight</b>	<b>80</b>
		Shower Tracks (Mini)	80
		Hospital Tracks (Mono)	80
		<b>U Shaped</b>	<b>80</b>
		Shower Tracks (Mini)	80
		Hospital Tracks (Mono)	80
		<b>Accessories</b>	<b>81</b>
		Wall Bracket (Shoe)	81
		Point Hangers	81
		Runners	81
		Ceiling Support	81
		<b>SHOWER CURTAINS</b>	<b>82</b>
		Standard Polyester	84
		Budget Taffeta	85
		Prepacked Polyester	85
		<b>Accessories</b>	<b>85</b>
		Shower Curtain Rings	85
		<b>SHOWER SEATS</b>	<b>86</b>
		<b>TOILET BACKRESTS</b>	<b>88</b>
		Straight Rail with Padded Rest	89
		Curved Rail with Padded Rest	89
		Vandal Proof with Curved Backrest	89
		<b>TOILET HARDWARE</b>	<b>90</b>
		Easy Rail Fittings	92
		Switchcocks - Water Diverter	92
		Backflow Valve	93
		Soap Dish	93
		Captive Toilet Roll Holder	93
		<b>THRESHOLD RAMPS</b>	<b>94</b>
		<b>RUBBER</b>	<b>96</b>
		Rubber	96
		<b>ALUMINIUM</b>	<b>97</b>
		Single Aluminium	97
		Double Sided Aluminium	98
		<b>KEY SAFE</b>	<b>100</b>
		<b>WALL MOUNTED</b>	<b>102</b>
		<b>PORTABLE</b>	<b>103</b>







# 2019 2020 Product Catalogue

Aids and  
Equipment for  
the Aged and  
Disabled

## AUSTRALIA HEAD OFFICE

14 John Hines Avenue  
Minchinbury NSW 2770  
1300 600 600  
sales@lencare.com.au

**WWW.LENCARE.COM.AU**

LENCARE | DIVISION OF DAVCOR GROUP PTY LTD  
ABN. 95 003 562 598 - v.1.0-916